

# njord



KUSCH+CO



KUSCH+CO

Straight lines with delicate curves. You can tell at first glance that Njord is rather exceptional! The material wood is worked into an unusually slender frame. The seat shell, entirely made of anthracite polyester felt, seduces with its organic design and the soft touch of its materiality. Four internationally recognised design awards provide convincing proof that the Njord armchair stands out above the rest.



## Content

Variations	6
Product data	7
Materials	10
Fire Prevention	11
Quality, sustainability	15
References	16



## Design by Scaffidi & Johansen

Antonio Scaffidi and Mads K. Johansen both graduated from the Danish Design School in Copenhagen. Whereas Antonio Scaffidi benefits from the symbiosis between his fiery Italian temperament and Nordic culture, Mads K. Johansen was driven by his artistic passion as cabinet maker. Their creative process is centered around flawless efficiency and design as comprehensible visualization. Mads K. Johansen's life journey ended in autumn 2014.





# Variations

---

## Njord armchair

An eye-catching design with a new level of comfort. As light as a side chair. The seat shell with an upholstered seat pad moulds to the body, offering the comfort level of an armchair. In addition, the armchair is stackable.



---

## Njord table

This occasional table is both an elegant and functional complement to the armchairs.



---

## Njord armchair / Njord table



Armchair

**NJORD ARMCHAIR 4L LGW FL**

Table

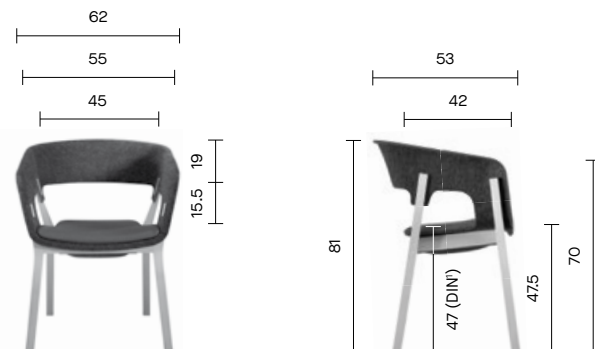
**NJORD TABLE LWM RD**

# Product data

## Njord armchair

### Accessories

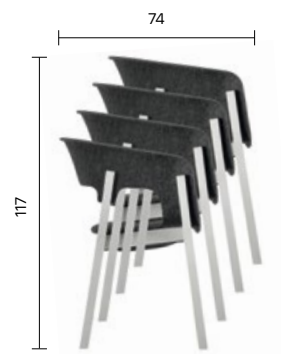
- Plastic glides
- Plastic glides with felt
- Metal glides
- Protect glides



Weight: 5.0 kg

### Stackability

- Stackable on dolly CART KU 1: 4 units
- Stackable on dolly CART KU 3: 4 units
- Stackable on dolly CART KU 2: 4 units
- 4 units recommended
- Height plus 12 cm per stacking armchair
- Depth plus 7 cm per stacking armchair



## Njord table

### NJORD TABLE LWM RD



### Accessories

- Plastic glides
- Plastic glides with felt



<sup>1</sup> The DIN seat height was determined acc. to DIN EN 1335-1, i.e. the seat height measured by means of a measuring device at the position of the ischial tuberosity (sitting bones) after having placed a load of 50 kg on the half width of the seat.

Dimensions in cm







# Materials

---

## Njord armchair

### Seat shell

- Polyester felt anthracite
- Upholstered seat pad with standard foam, optionally available with flame retardant foam

### Frame

- Natural beech or stained
- Natural oak
- Optional with antibacterial surface coating

### Cleaning

Owing to the fact that the material polyester felt is non-absorbent and liquids are not able to soak through this material, it is possible to remove liquid and solid stains without residues.

---

## Njord table

### Top

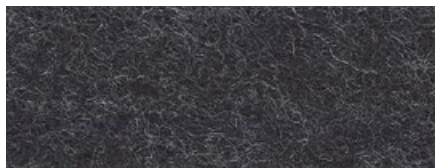
- Table top board core plywood, finish Fenix NTM®, thickness 13 mm

### Frame

- Natural beech or stained
- Screwed-on plate RAL 9005 jet black powder coated

---

## Polyester felt



FK01 anthracite, for seat shell armchair



# Fire Prevention

Excerpt

---

## Fire Prevention

Depending on the environment, contract seating has to be able to fulfil very specific requirements. Interior designers and planners sometimes have to clear difficult hurdles: such as exacting fire prevention regulations. Kusch+Co has worked out individual solutions:

### Wooden parts

As standard, wooden parts are protected by a UV curing, environmentally harmless, water-based lacquer meeting all the requirements of "low flammability" acc. to DIN EN 13501 B s2 d0.

### Seat shell

The felt seat shell meets the standard EN 1021 part 1/2.

### Upholstery

The upholstered pads are optionally available with flame retardant foam.

Test reports in compliance with national and international standards document the laboratory fire tests conducted on different series finished with a wide variety of materials.

With regard to the upholstery, e.g. with leather, artificial leather as well as many textile fabrics, or to our unupholstered variations featuring a

plywood, laminated or plastic seat shell, most of our series meet the following standards:

- Germany: DIN 66084 P-a
- France: NF D 60-013
- Great Britain: BS 5852 Crib 5
- Italy: UNI 9176
- Europe: EN 1021 part 1/2

Please contact us if you wish to receive the test reports.

Please contact us to receive further information.









# Quality, sustainability

Excerpt

## Quality

Our environmental and quality management systems are certified acc. to DIN EN ISO 14001:2015 and to DIN EN ISO 9001:2015. External audits as well as our in-house laboratory safeguard our quality level.

All variations of series Njord meet the requirements with regard to stability, static and dynamic load as well as strength and durability in compliance with the current European Directives, standards and regulations.

On top of this, we test most of our contract seating with higher loads and cycles. On request, we conduct individual tests acc. to the customer's specifications.

The table Njord meet the requirements with regard to stability, static and dynamic load as well as strength and durability in compliance with the current European Directives, standards and regulations.

We are certified in compliance with DIN EN ISO 9001:2015. In our own laboratory, we test our products before their market launch whether they comply with the normative requirements applicable to contract seating, task chairs, and tables, and issue a Declaration of Conformity.

We happily make these Declarations of Conformity as well as our brochure "Mission Statement Quality" providing detailed information on our test procedures available to you – please contact us.



## Sustainability

Kusch+Co products stand for long life cycles and optimum recyclability. From the first design drafts of a new product, we take all environmental-relevant components and production processes into consideration, ranging from the materials selection and the design all the way to the manufacturing processes which also contribute towards our sustainable energy balance.



# References

Excerpt

## Belgium

- Residential care and nursing home De Waterdam, Roeselare
- Residential care and nursing home Sint-Elisabeth, Ostend

## Brazil

- Facebook, São Paulo

## China

- Miele House, Shanghai

## Denmark

- Uformel, Copenhagen

## Germany

- Aramark GmbH Refreshment Services, Gerlingen
- Artemide GmbH, Fröndenberg
- Centre for Creative Industries, Weimar
- Dorint An den Thermen, Freiburg
- FAM Magdeburger Förderanlagen und Baumaschinen GmbH, Magdeburg
- Hotel Die Sonne, Frankenberg
- Lebenshilfe Soltau e. V.
- LWL – Regional Council of Westphalia-Lippe, Münster
- MeisterWerke Schulte GmbH, Rüthen
- Michels Hotels GmbH, Norderney
- Sal's Kitchen, Cologne
- Sonett GmbH, Deggenhausen
- Sports Association of North Rhine-Westphalia, Sports and convention centre, Hachen
- Technologie- und Gründerzentrum Freital GmbH
- Vaude Sport GmbH & Co. KG, Tett nang
- W. & L. Jordan GmbH, Kassel

## Mexico

- Secrets Puerto Los Cabos Golf & Spa Resort, San José del Cabo

## Poland

- Viessmann Sp.z.o.o., Wroclaw

## Switzerland

- Hospital St. Georg, Goldach

## United Kingdom

- Cambridge Montessori School, Cambridge

## USA

- Boston University, Tyngsboro
- Google, Carlstadt
- Kilachand Honors College, Boston
- Mylan Southpointe, Mc Kees Rocks
- Princeton University, Edison











Residential care and nursing home De Waterdam, Roeselare







Miele House, Shanghai



Aramark GmbH Refreshment Services, Gerlingen





08/2022 EN Subject to technical modifications / colour variations

Kusch+Co GmbH  
P.O. Box 1151  
59965 Hallenberg  
Germany

T +49 2984 300-0  
welcome@kusch.com  
kusch.com