

# Soft Modular Sofa

Jasper Morrison, 2016



The Soft Modular Sofa is Jasper Morrison's updated interpretation of what has become a modern classic: the low-slung modular sofa with a decidedly horizontal emphasis. Uniting carefully balanced proportions, great comfort and a conscious renunciation of decorative details, the Soft Modular Sofa exemplifies the characteristics of this sofa type in their purest form. Firmly in line with his philosophy of 'super normal' design, Jasper Morrison has successfully coupled home-like informality with precise finishing and expressive clarity. As a result, the Soft Modular Sofa functions like an architectural element that can be subtly integrated in any interior.

The voluminous cushions invite the sitter to lounge and relax on the Soft Modular Sofa. Its high-quality interior construction, consisting of various foams and a spring core, offers superb comfort and ensures that the cushions return to their original form after use. The black base frame is part of the functional structure, enabling a practical and stable connection of the modules. Designed as a plinth-like platform with rounded corners, it also references the sensual elegance of art deco.

Thanks to its modular design with side, corner and central elements, platform and chaise longue, the size and form of the Soft Modular Sofa can be customised to meet a diverse range of requirements. And optional elements like the ottoman and additional cushions as well as a wide selection of leather and fabric covers in an array of colours allow further personalisation of any individual configuration.

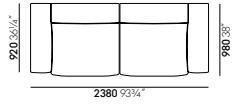
## Materials

- **Seat:** steel frame, wood construction with steel springs, polyurethane foam structure and visco cover.
- **Seat height:** 380 mm (270 mm with applied load, measured in accordance with EN 1335-1:2000).
- **Armrests and backrest:** wood construction with polyurethane foam structure and chamber cushion overlay (filling made of polyurethane foam rods and polyester fibres).
- **Covers:** removable.
- **Throw cushions:** foam cube and ball fibre filling.
- **Neck cushion:** polypropylene pellet filling.
- **Glides:** plastic glides with levelling adjustment.
- **Ottoman structure:** wood construction, steel springs and polyurethane foam structure with visco cover.

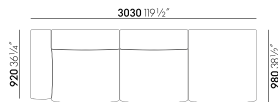
1 Soft Modular Sofa  
2-4 Configurations

5 Loose cushions,  
cushion combinations  
6 Upholstery construction

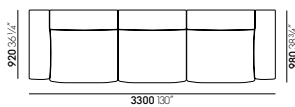
7-16 Cover fabrics  
17-19 Dimensions  
20 Coffee and side tables



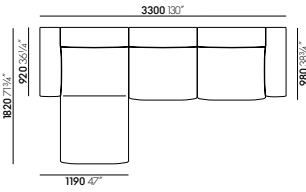
**Two-seater** consisting of side elements left and right, with decorative cushions.



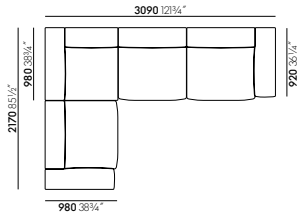
**Three-seater** consists of a side element left with a low armrest, a central element and a platform right.



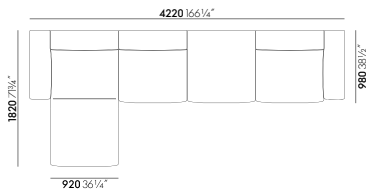
**Three-seater** consisting of side element left, central element, side element right, with short neck cushion and free-standing ottoman.



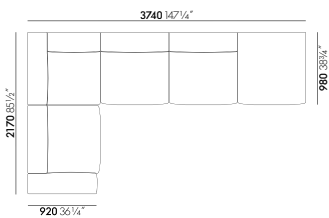
**Three-seater** consisting of chaise longue left, central element and side element right, with decorative cushions and a long neck cushion.



**Corner sofa** consists of a side element left, a corner element left, a central element and a side element right, with decorative cushions and a long neck cushion.



**Four-seater** with chaise longue consisting of chaise longue left with low armrest, central element, central platform and side element right with low armrest.



**Corner sofa** consists of a side element left with low armrest, a corner element left, two central elements and a platform right.



Optional throw cushions and neck cushions are available to personalise the seating comfort and add decorative accents. The cushions can be ordered in the same choice of cover materials as the sofa elements.

**Filling:**

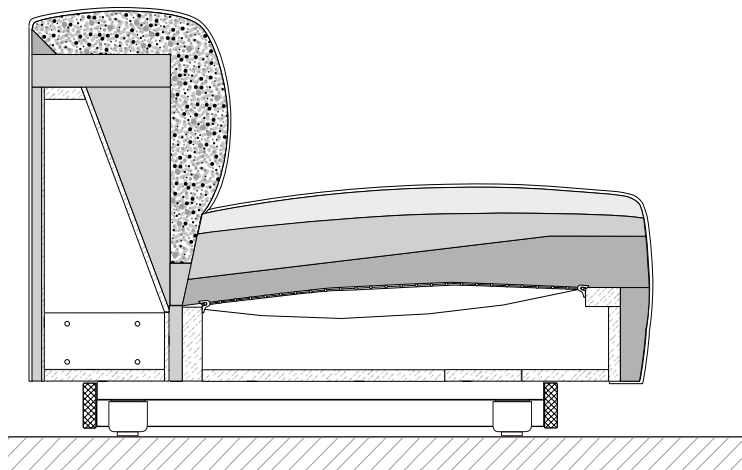
- neck cushions filled with plastic beads
- throw cushions filled with PU chips and PU beads

**RECOMMENDED CUSHION COMBINATIONS**

Both the neck cushions and throw cushions are optional. Here is a brief overview of how they can be combined with different sofa configurations:



	Decorative cushions			Neck cushions	
	40 x 30 cm	40 x 40 cm	50 x 50 cm	short	long
Two-seater	2x		2x		
Three-seater	2x	2x	1x		1x
Corner sofa 4 elements	2x	2x	1x	1x	
Corner sofa 5 elements	2x	2x	2x	1x	1x



### Sectional drawing of upholstery construction

The construction of the Soft Modular Sofa provides outstanding comfort: the underlying foundation is a box-like wooden frame, which rests on individually height-adjustable legs concealed by the black base frame. No-sag steel springs are integrated in the seat area of the wooden frame. These ensure that the cushions return to their original shape after use and prevent ripples from forming in the cover material.

The seat and back cushions consist of two optimally coordinated types of foam with varying degrees of firmness. The upholstery structure is completed with a layer of viscoelastic foam, which keeps the sitter from sinking too deeply into the seat.

All these elements are carefully balanced, ensuring that the Soft Modular Sofa satisfies the comfort needs of all customers. The back and armrests have a similar construction and can be sat on without fear of damaging the upholstery.

No animal feathers are used in the upholstery. This avoids the typical rustling sound associated with such materials and also makes the Soft Modular Sofa suitable for people who are allergic to animal feathers.

### USEFUL FACTS ABOUT UPHOLSTERY

Vitra has over fifty years of experience in the production of upholstered furniture. Premium materials, skilled craftsmanship and high quality standards at Vitra are a guarantee for long-lasting products. In Vitra's own test centre, our upholstered furnishings are regularly subjected to a wide range of tests that far exceed common standards.

#### Care instructions:

Exposure to direct sunlight should be avoided whenever possible, since intensive radiation can cause cover materials to fade.

To retain the original fullness and shape of your sofa, cushions should be regularly shaken and plumped.

Folds and creases from sitting can be prevented in all types of upholstery by smoothing the cover material after use.

## Aura Home/Office, F120



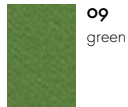
The woollen textile Aura has a classic satin (atlas) weave with a fine, soft surface. This fabric is distinguished by a supremely soft feel, lustrous sheen and smooth even surface. The solid and mixed colours feature dynamic, highly saturated tones made possible by wool's excellent dyeability.

Aura is available in 26 colours.

Material	10% polyamide, 90% new wool
Weight	390 g/m <sup>2</sup> (11.5 oz/y <sup>2</sup> )
Width	144 cm +/- 2 cm (56")
Abrasion resistance	20,000 Martindale
Fastness to light	Type 5
Pilling	Grade 3-4
Fastness to rubbing	Grade 3-4 dry and wet



**02**  
marble



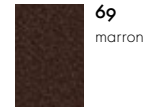
**09**  
green



**10**  
pale blue



**04**  
stone



**69**  
marron



**15**  
cherry



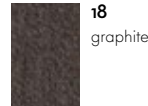
**03**  
sand



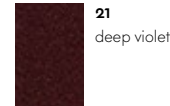
**62**  
emerald



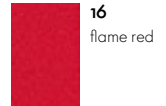
**11**  
petrol blue



**18**  
graphite



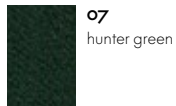
**21**  
deep violet



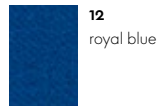
**16**  
flame red



**06**  
canary



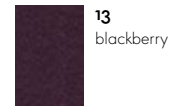
**07**  
hunter green



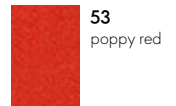
**12**  
royal blue



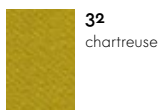
**08**  
anthracite



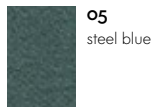
**13**  
blackberry



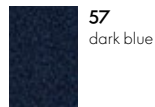
**53**  
poppy red



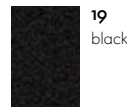
**32**  
chartreuse



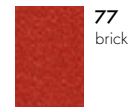
**05**  
steel blue



**57**  
dark blue



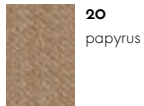
**19**  
black



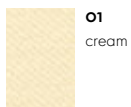
**77**  
brick



**14**  
pale rose



**20**  
papyrus



**01**  
cream

# Cosy 2 Home/Office, F8o

**vitra.**



Cosy 2 is a high-quality milled woollen cloth with a warm character. The lively melange yarn emphasises the fabric's natural colours – from delicate shades to vibrant hues – and gains added elegance with colour-coordinated stitching. The fabric offers thermal comfort and excellent durability, making it suited for upholstered furniture in office settings as well as residential applications.

Cosy 2 is available in 15 colours.

Material	20% polyamide, 80% new wool
Weight	590 g/m <sup>2</sup> (17.4 oz/y <sup>2</sup> )
Width	154 cm +/- 2 cm (60")
Abrasion resistance	50,000 Martindale
Fastness to light	Type 6
Pilling	Grade 4-5
Fastness to rubbing	Grade 4-5 dry and wet



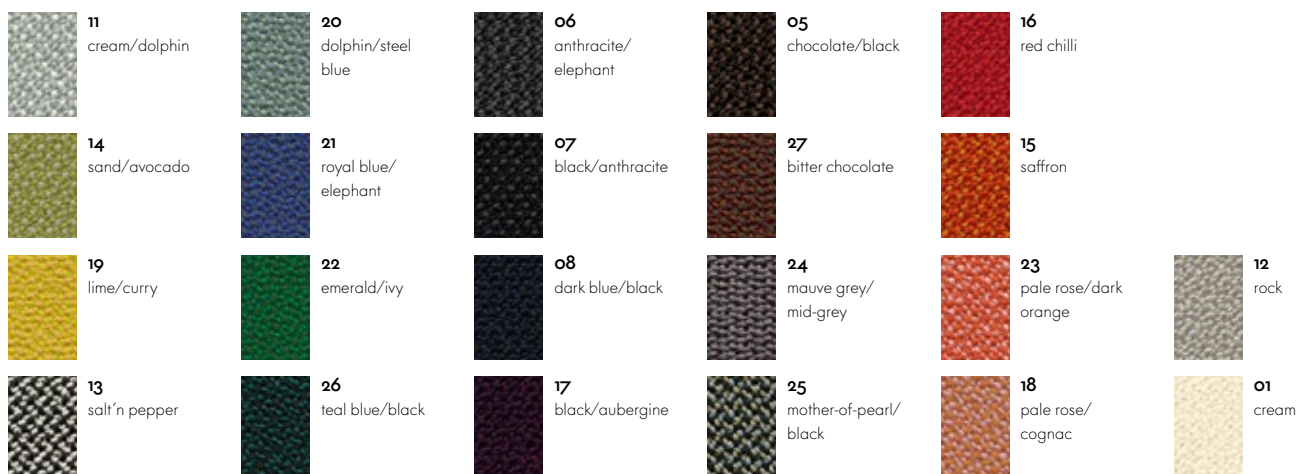
# Credo Home/Office, F12o



Credo is a durable woollen fabric made of premium worsted yarn with a pleasant feel. The two- and three-tone colours give this fabric a characteristic structure and vibrant appearance. Credo allows for an effective exchange of heat to ensure comfortable thermal conditions for the sitter. The fabric can also be used in office environments.

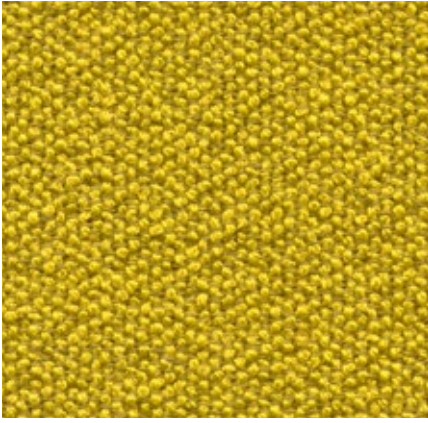
Credo is available in 22 colours.

Material	5% polyamide, 95% new wool
Weight	640 g/m <sup>2</sup> (18.9 oz/y <sup>2</sup> )
Width	145 cm +/- 2 cm (57")
Abrasion resistance	100,000 Martindale
Fastness to light	Type 6
Pilling	Grade 4-5
Fastness to rubbing	Grade 4-5 dry and wet





# Dumet Home, F8o



Dumet is a cotton blend in a plain weave with a lively appearance. The natural mixed tones create an elegant look with an Italian flair. Dumet is soft and cool to the touch.

Dumet is available in 20 colours.

Material	9% polyamide, 46% cotton, 8% linen, 22% wool, 15% rayon
Weight	485 g/m <sup>2</sup> (14.3 oz/y <sup>2</sup> )
Width	147 cm +/- 2 cm (57")
Abrasion resistance	40,000 Martindale
Fastness to light	Type 5
Pilling	Grade 3-4
Fastness to rubbing	Grade 3-4 dry and wet



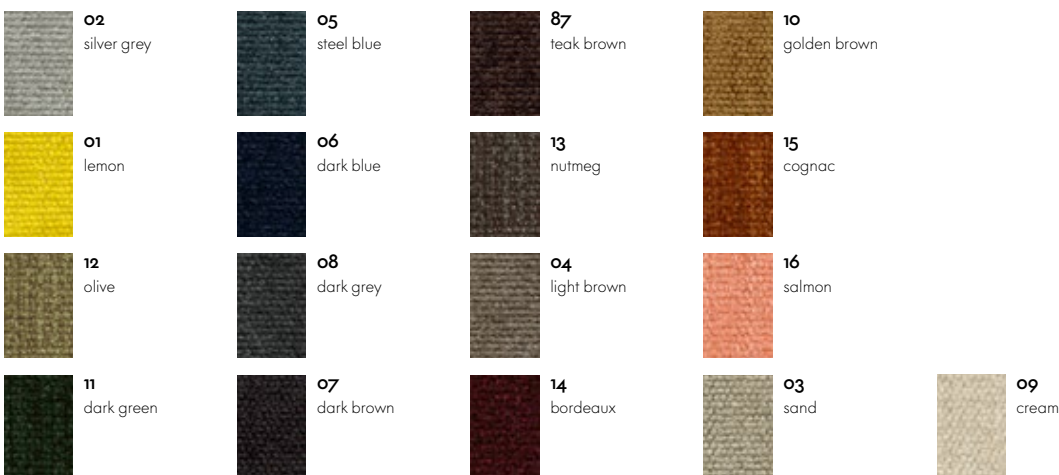
# Iroko 2 Home, F8o



Iroko 2 is a soft, flat woven fabric made with chenille yarn. The piles in the yarn give the weave a lively surface texture with an inviting, velvety touch. The fabric's cotton fibres provide excellent cooling properties.

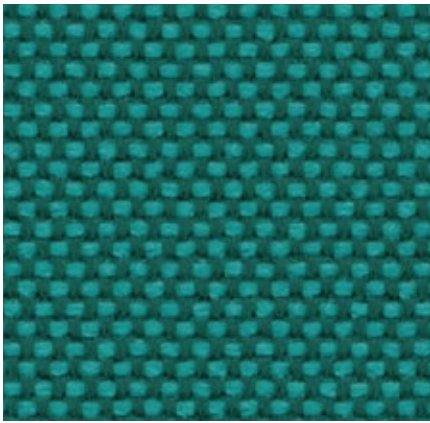
Iroko 2 is available in 17 colours.

Material	32% cotton, 48% polyacrylics, 20% polyester
Weight	700 g/m <sup>2</sup> (20.6 oz/y <sup>2</sup> )
Width	152 cm +/- 3 cm (60")
Abrasion resistance	40,000 Martindale
Fastness to light	Type 5
Pilling	Grade 3-4
Fastness to rubbing	Grade 3-4 dry and wet



# Laser RE Home/Office, F40

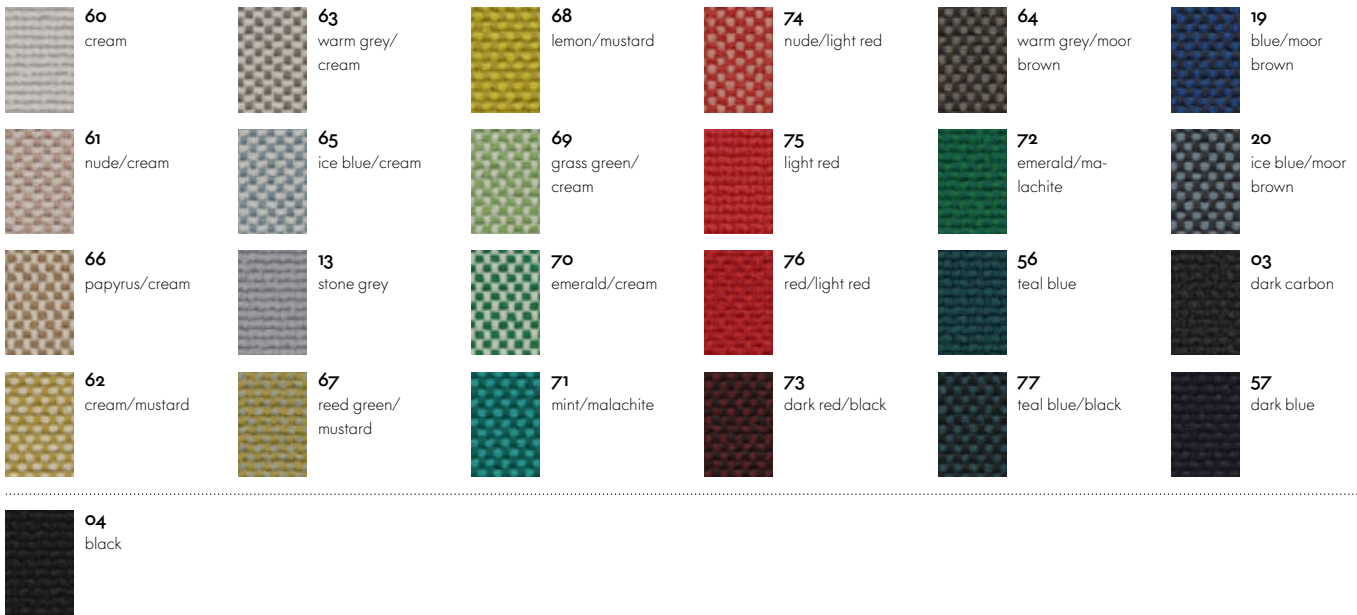
**vitra.**



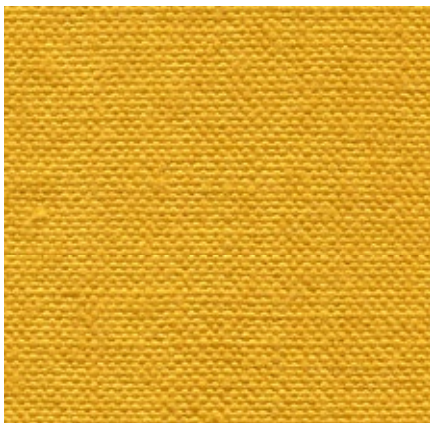
The environmentally friendly fabric Laser RE is made from recycled polyester. It has a distinctive woven appearance, which is particularly accentuated by contrasting duotones in a varied palette of 25 colours. Practical and easy to care for, as well as durable and highly abrasion-resistant, Laser RE is also well suited for office environments.

Laser RE is available in 25 colours.

Material	100% recycled polyester
Weight	520 g/m <sup>2</sup>
Width	144 cm +/- 2 cm
Abrasion resistance	100,000 Martindale
Fastness to light	Type 6
Pilling	Grade 4-5
Fastness to rubbing	Grade 4-5 dry and wet



# Linho Home, F80



The high-quality linen fabric Linho is manufactured in Belgium, from the plant to the finished textile. It has the slightly irregular appearance that is typical of linen yarn. Due to its high percentage of linen, Linho tends to form elegant creases, lending a natural look to soft upholstered furniture.

Linho is available in 10 colours.

Material	9% polyamide, 91% linen
Weight	450 g/m <sup>2</sup> (13,3 oz/y <sup>2</sup> )
Width	137 cm +/- 2 cm (54")
Abrasion resistance	18,000 Martindale
Fastness to light	Type 5
Pilling	Grade 3
Fastness to rubbing	Grade 3 dry and wet



# Mello Home, F40



Mello is an elegant cotton fabric with a pleasant softness and cool tactile qualities. Thanks to a thicker melange yarn of recycled cotton, the robust twill weave has a lively yet balanced appearance. The understated colour palette for Mello ranges from pastel tones to natural, earthy shades and darker hues.

Mello is available in 8 colours.

Material	80% cotton, 20% polyester
Weight	530 g/m <sup>2</sup> (15,6 oz/y <sup>2</sup> )
Width	142 cm +/- 2 cm (56")
Abrasion resistance	30,000 Martindale
Fastness to light	Type 5
Pilling	Grade 4
Fastness to rubbing	Grade 3-4 dry and wet



# Nubia Home, F100

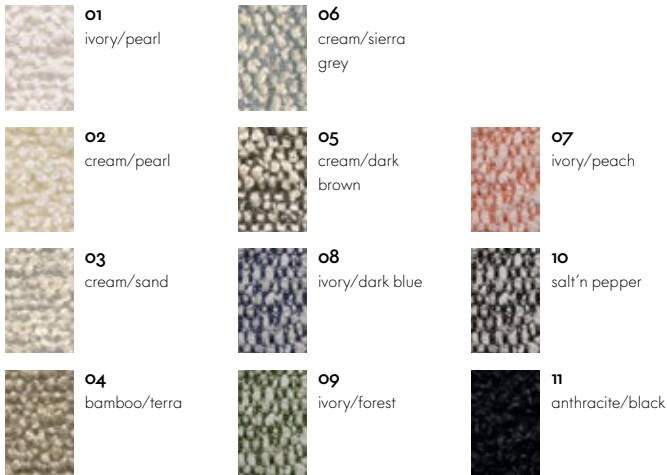
**vitra.**



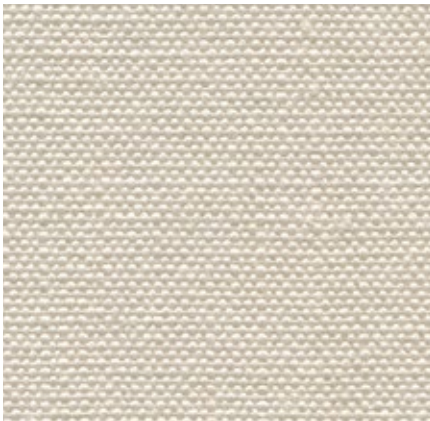
Nubia is a blended fabric with a very lively, natural appearance. Its fine sub-structure is interspersed with voluminous bouclé yarn, which gives the fabric depth and a soft, inviting touch. The varying combinations of yarns in natural tones yield either contrasting or calm colour compositions with a distinctly Mediterranean flair.

Nubia is available in 11 colours.

Material	2% polyamide, 30% new wool, 25% polyacrylics, 43% polyester
Weight	570 g/m <sup>2</sup> (16.8 oz/y <sup>2</sup> )
Width	140 cm (55")
Abrasion resistance	35,000 Martindale
Fastness to light	Type 5
Pilling	Grade 4
Fastness to rubbing	Grade 3-4 dry and wet



# Olimpo Home, F60



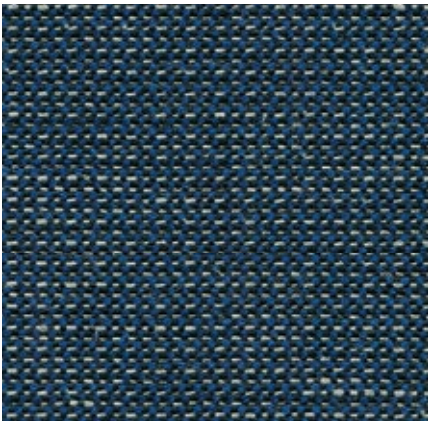
The typical linen texture of Olimpo gives the fabric a very fine and natural overall appearance. The fabric's high percentage of linen, clearly evident to the touch, results in comfortably cool conditions for the sitter. Thanks to the combination of viscose and linen, the fabric is durable and abrasion-resistant and exhibits a fine sheen.

Olimpo is available in 10 colours.

Material	70% linen, 30% rayon
Weight	520 g/m <sup>2</sup> (15.3 oz/y <sup>2</sup> )
Width	146 cm +/- 3 cm (57")
Abrasion resistance	30,000 Martindale
Fastness to light	Type 5
Pilling	Grade 3-4
Fastness to rubbing	Grade 3-4 dry and wet



# Reed Home, F100



The elegant finely patterned fabric Reed is a blend of linen, wool and cotton. The structure of the fabric designed by Hella Jongerius has a hand-made look, its irregular lively linen yarn lending the fabric a natural expression. Reed is cool and soft to the touch and can be perfectly combined with other fabrics and materials.

Reed is available in 19 colours.

Material	7% polyamide, 48% cotton, 25% new wool, 20% linen
Weight	400 g/m <sup>2</sup> (11.8 oz/y <sup>2</sup> )
Width	142 cm +/- 2 cm (56")
Abrasion resistance	50,000 Martindale
Fastness to light	Type 5
Pilling	Grade 3-4
Fastness to rubbing	Grade 3-4 dry and wet



# Savana Home, F80



Savana is a blended fabric woven from yarns of varying thickness, which give it an irregular texture with a lively and elegant appearance. A palette of subdued and natural earth tones, along with the dry, pleasant feel of the textile, emphasise the fabric's Italian flair.

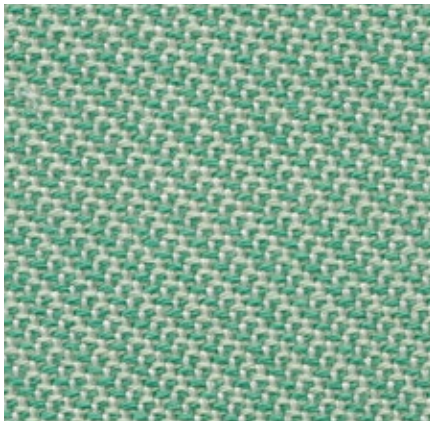
Savana is available in 8 colours.

Material	8% polyamide, 19% cotton, 50% polyacrylics, 23% linen
Weight	820 g/m <sup>2</sup> (24.2 oz/y <sup>2</sup> )
Width	140 cm (55")
Abrasion resistance	30,000 Martindale
Fastness to light	Type 5
Pilling	Grade 3-4
Fastness to rubbing	Grade 3-4 dry and wet



# Track Home/Office, F120

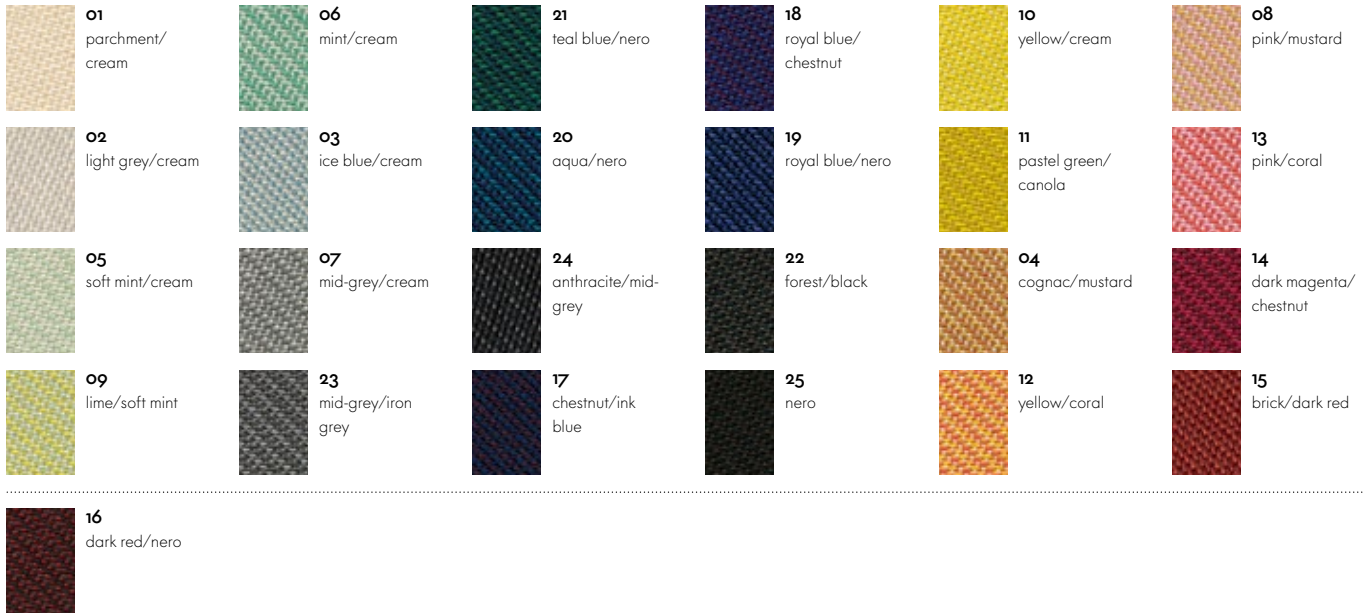
**vitra.**



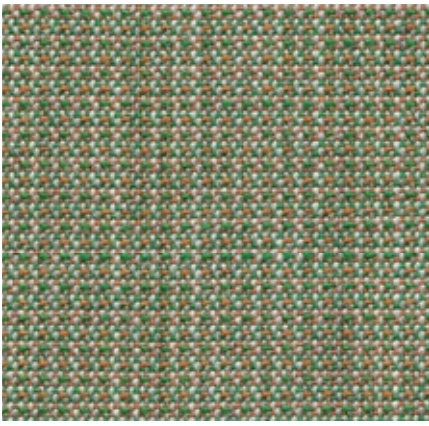
Track is a medium-weight woollen fabric with a subtle pattern of fine diagonal stripes, which gives it a sporty, fresh appearance. Thanks to its high quality, the fabric is suited for office environments, but also adds a beautiful touch to home interiors.

Track is available in 25 colours.

Material	10% polyamide, 90% new wool
Weight	480 g/m <sup>2</sup> (14.2 oz/y <sup>2</sup> )
Width	143 cm +/- 2 cm (56")
Abrasion resistance	100,000 Martindale
Fastness to light	Type 6
Pilling	Grade 4-5
Fastness to rubbing	Grade 4-5 dry and wet



# Tress Home/Office, F8o



Tress is a flat woven fabric with a lively appearance that derives from the contrast between its even structure and the natural melange of colours. The combination of yarns with varied hues creates a harmonious and yet vibrant look. Thanks to its high wool content, Tress is a durable, easy-care material with a home-like aesthetic.

Material	8% polyamide, 73% new wool, 19% polyester
Weight	310 g/m <sup>2</sup> (9.1 oz/y <sup>2</sup> )
Width	142 cm +/- 2 cm (56")
Abrasion resistance	40,000 Martindale
Fastness to light	Type 6
Pilling	Grade 4-5
Fastness to rubbing	Grade 4-5 dry and wet

Tress is available in 22 colours.



# Volo Home/Office, F6o



Volo is a finely structured wool blend with a refined weave that gives it an elegant appearance. This expressive textile shows strong solid colours to full advantage while simultaneously offering pleasant tactile qualities. With its soft look and appealing texture, Volo is a perfect fit for home interiors, but it is also well suited for use in the contract sector.

Material	15% polyamide, 85% new wool
Weight	435 g/m <sup>2</sup> (12.8 oz/y <sup>2</sup> )
Width	145 cm +/- 3 cm (57")
Abrasion resistance	100,000 Martindale
Fastness to light	Type 6
Pilling	Grade 4-5
Fastness to rubbing	Grade 4-5 dry and wet

Volo is available in 17 colours.



# Leather Home/Office, L20

**vitra.**



The standard grade leather used by Vitra is a robust cowhide leather, dyed-through, pigmented and embossed with an even grain pattern. Since it is hard-wearing and easy to maintain, it can also be used in office environments.

Leather is available in 16 colours.

Material	Robust cowhide with a distinctive, even grain
Fastness to light	Type 6
Thickness	1.1–1.3 mm
Fastness to rubbing	Grade 4 dry and wet



# Leather Premium F Home/Office, L50



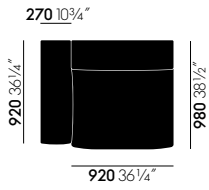
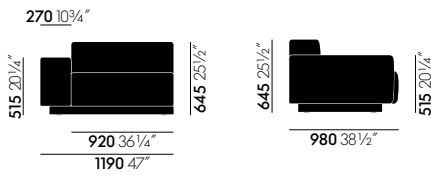
Leather Premium F is a relatively smooth cowhide leather with a flat grain and fine top sheen. It is dyed-through, lightly pigmented and processed with a tanning agent extracted from olive tree leaves (a waste product of the olive harvest).

Leather Premium F is available in 22 colours.

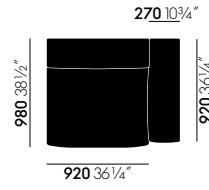
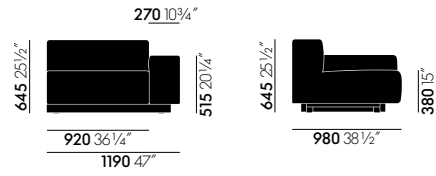
Material	Semi-aniline nappa leather with a very soft and supple feel, vegetable tanned
Fastness to light	Type 5
Thickness	1.1–1.3 mm
Fastness to rubbing	Grade 4 dry and wet



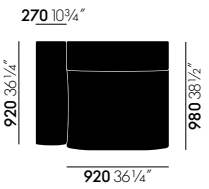
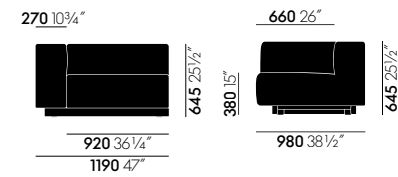




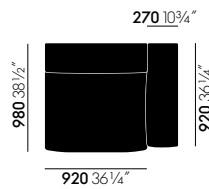
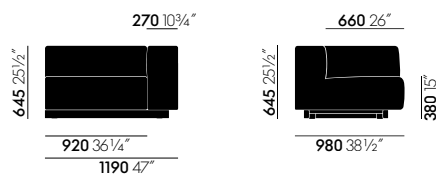
Side element left - low armrest



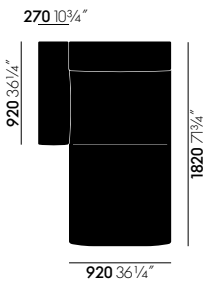
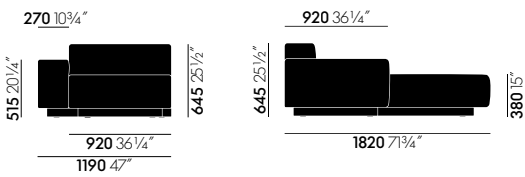
Side element right - low armrest



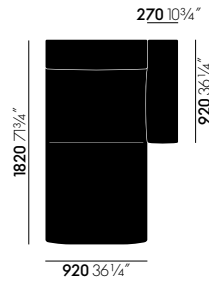
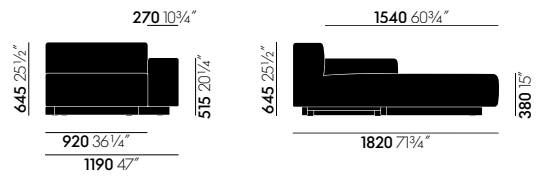
Side element left - high armrest



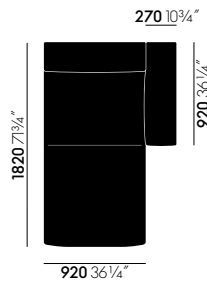
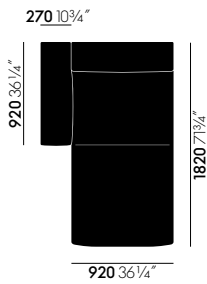
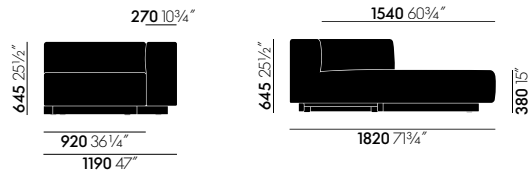
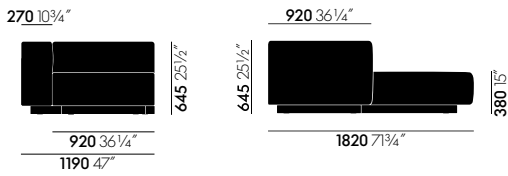
Side element right - high armrest



Chaise Longue left - low armrest

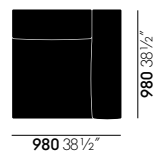
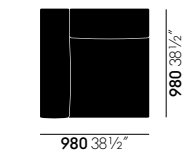
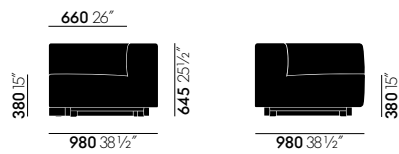
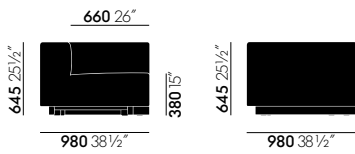


Chaise Longue right - low armrest



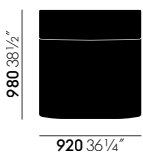
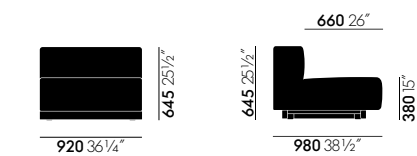
Chaise Longue left - high armrest

Chaise Longue right - high armrest

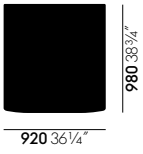


Corner element left

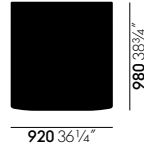
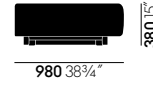
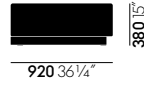
Corner element right



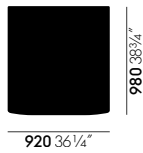
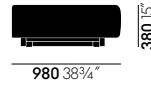
Central element



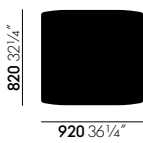
Platform left



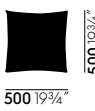
Platform right



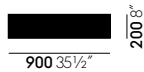
Platform central



Ottoman



Decorative cushions



Neck cushion

## COUCH AND SIDE TABLES

**vitra.**

Thanks to its modest design, the Soft Modular Sofa can be combined with many types of coffee tables. From the available Vitra coffee tables, we recommend the following models:



**Eames Coffee Table,**  
Marble table top,  
Charles & Ray Eames, 1949  
76 x 76 x 39 cm



**Eames Coffee Table,**  
Wooden table top,  
Charles & Ray Eames, 1949  
114 x 76 x 39 cm



**Coffee Table,**  
Isamu Noguchi, 1944  
128 x 93 x 40 cm



**Metal Side Table,**  
Ronan & Erwan Bouroulec, 2004  
31,5 x 31,5 x 38 cm | 40 x 40 x 44,5 cm |  
70 x 31,5 x 33,5 cm



**Wood Side Table,**  
Ronan & Erwan Bouroulec, 2016  
31,5 x 31,5 x 38 cm | 40 x 40 x 44,5 cm |  
70 x 31,5 x 33,5 cm



**Occasional Low Table Wood,**  
Jasper Morrison, 2016  
Ø 50 x 35, 45, 55 cm



**Occasional Low Table Aluminium,**  
Jasper Morrison, 2016  
Ø 50 x 35, 45, 55 cm



**Plate Table, Jasper Morrison, 2004**  
40 x 40 x 37 cm | 70 x 70 x 37 cm | 120 x 40 x 37 cm | 120 x 70 x 37 cm

