

AMOR CORTESE

Monica Armani. 2016

ESPAÑOL

Colección de sofás y chaiselongue únicos por su respaldo curvado de madera contrachapada natural y zócalo en madera maciza. Se sirven las partes por separado para facilitar el transporte y acceso a su destino.

MATERIALES

- Respaldo en madera contrachapada de roble o nogal.
- Zócalo en madera maciza de roble o nogal.
- Patas en madera maciza con pies regulables metálicos.
- Almohadones de asiento con interior de poliuretano expandido y fibra de poliéster en ignífugo (según normativa inglesa).
- Almohadones auxiliares de pluma lavada y esterilizada de pato y oca con fibra hueca y siliconada 100% con tratamiento anti ácaros.

ENGLISH

Sofas and loungers with a particular curved plywood back and solid wood plinth. For transport and access purposes, elements are delivered unassembled.

MATERIALES

- Oak or walnut veneered plywood back.
- Solid oak or walnut plinth.
- Solid wood legs with adjustable metal feet.
- Expanded polyurethane and polyester fibre seat cushions conforming to UK BS regulations.
- Duck and goose feather ancillary cushions.

FRANÇAIS

Collection de canapés et chaises longues uniques pour leur dossier courbé en bois naturel contreplaqué et socle en bois massif. Les parties sont livrées séparément pour faciliter le transport et l'accès à destination.

MATÉRIAUX

- Dossiers en contreplaqué de chêne ou de noyer
- Socle en bois massif de chêne ou de noyer
- Pieds en bois massif réglables
- Coussins d'assise avec garnissage en polyuréthane expansé et fibre de polyester ignifuge (selon norme anglaise)
- Coussins auxiliaires en plume lavée et stérilisée de canard et d'oie et fibre creuse siliconée 100% avec traitement anti-acariens.

DEUTSCH

Sammlung von einzigen Sofas und Liegestühle wegen ihrer natürlichen Sperrholz gekrümmten Stuhllehnen und ihrer massiven Holzsockel.

In verschiedene Teile getrennt damit einen leichten Transport und zugänglich zu Ziel haben.

MATERIALIEN

- Sperrholzlehne von Eiche oder Walnuss.
- Eichen oder Walnussmassive Holzsockel.
- Massivholz Beinen mit verstellbaren metallischen Füße.
- Grosse Sitzkissen mit UP Ausfüllung und feuerbeständige Polyesterfaser (nach der englischen Vorschriften)
- Grosse Zusatzkissen mit gewaschen und sterilisierten Ente- und Gänsefedern mit hohlen und 100% silikonierten Faser Ausfüllung mit antimilben Behandlung.

ITALIANO

Collezione di divani e chaiselongue originali grazie ai loro schienali curvi in legno impiallacciato naturale con zoccolo in legno massello

Si forniscono le singole parti separate per facilitarne il trasporto a destinazione

MATERIALI

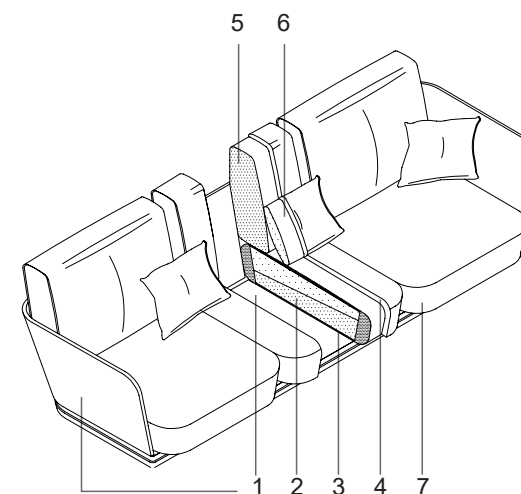
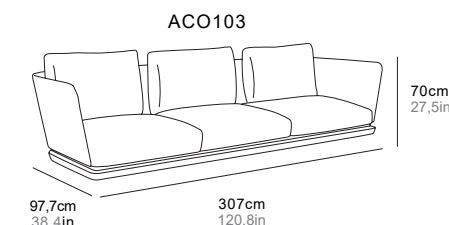
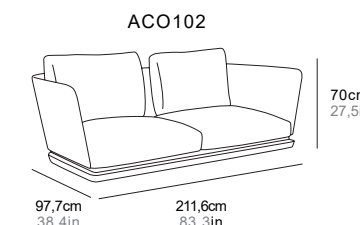
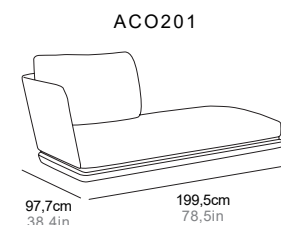
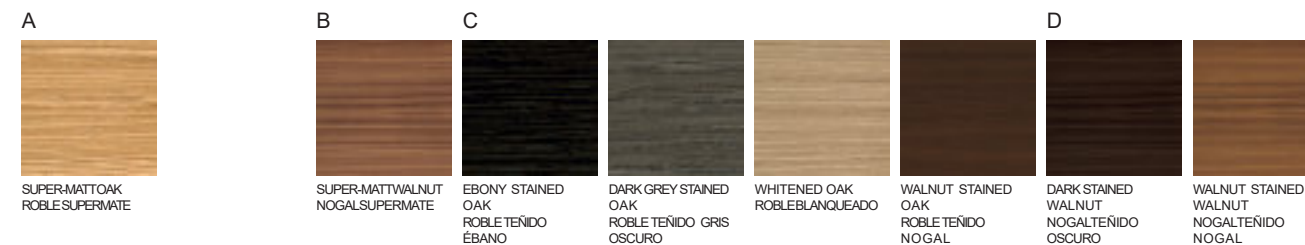
- Schienali in legno impiallacciato di rovere o noce
- Zoccolo in legno massello di rovere o noce
- Piedi in legno massello con supporti metallici regolabili
- Cuscini seduta con interno in poliuretano espanso e fibra poliestere ignifuga (secondo normativa inglese).
- Cuscini ausiliari in piuma d'oca e anatra lavata e sterilizzata con fibra cava e silicone 100% con trattamento antiacaro.

AMOR CORTESE



FINISHES.ACABADOS

FRAME. ESTRUCTURA



- 1- Frame and backrest of oak or walnut wood.
- 2- Flameproof foams of flexible polyurethane in different densities.
- 3- Flame-retardant black foaming.
- 4- 150-grams padding.
- 5- 80% duck and goose washed sterile feathers, with 20% hollow microfiber and 100% anti-mite silicone.
- 6- Hollow microfiber and 100% anti-mite silicone.
- 7- Textile.

SEATAND BACK. ASIENTO Y RESPALDO

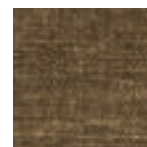
L'INTERNO-ACUATONIC



Aquatonic 101



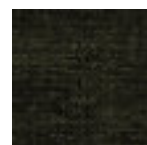
Aquatonic201



Aquatonic302



Aquatonic902



Aquatonic999

CHARACTERISTICS

Comp. 48% AC 41%PL11%CO

TEXTILES G2

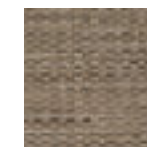
CARACTERÍSTICAS

Comp. 48% AC 41%PL11%CO

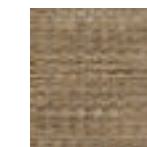
L'INTERNO -RUBENS



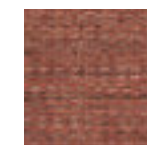
Rubens 1



Rubens2



Rubens 12



Rubens7



Rubens 15

CHARACTERISTICS

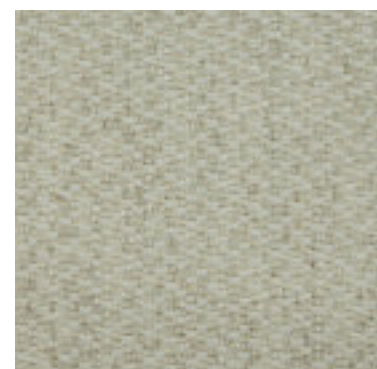
Comp. 65%AC 35%PL

CARACTERÍSTICAS

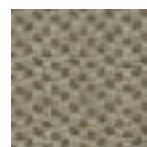
Comp. 65%AC 35%PL

TEXTILES G2

L'INTERNO-APOLLO



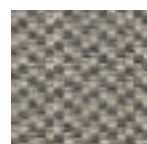
Apollo 1



Apollo 2



Apollo 81



Apollo 9



Apollo 99

CHARACTERISTICS

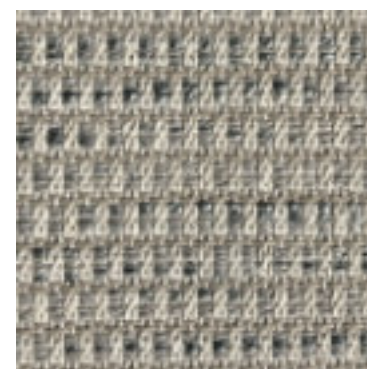
Comp. 42%CO 25%VI 20%PL 13%LI

TEXTILES G2

CARACTERÍSTICAS

Comp. 42%CO 25%VI 20%PL 13%LI

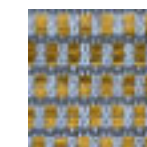
MANUEL REVERT-ODDI



Oddi 9



Oddi 90



Oddi 10



Oddi 55



Oddi 38

CHARACTERISTICS

Comp. 45% PES43% CO 11%PAC 1%PA

CARACTERÍSTICAS

Comp. 45% PES43% CO 11%PAC 1%PA

TEXTILES G2

L'INTERNO - RELATE



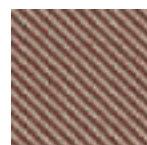
Relate 101



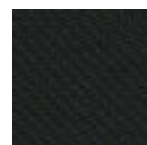
Relate 121



Relate 611



Relate 341



Relate 191

CHARACTERISTICS

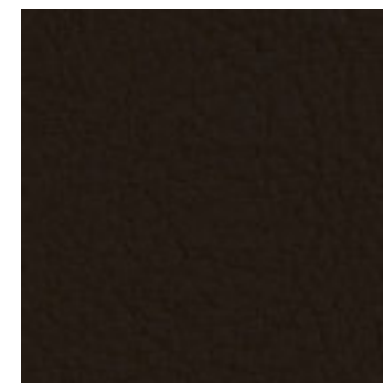
Comp. 100%Trevira CS

CARACTERÍSTICAS

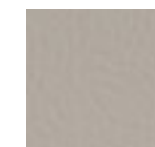
Comp. 100%Trevira CS

TEXTILES G2

SPRADLINGVALENCIA



VALENCIA PRALINE0001



VALENCIA WEISS
8032



VALENCIA LEINEN
1049



VALENCIA SCHWARZ
9035



VALENCIA GRAPHITE
4003

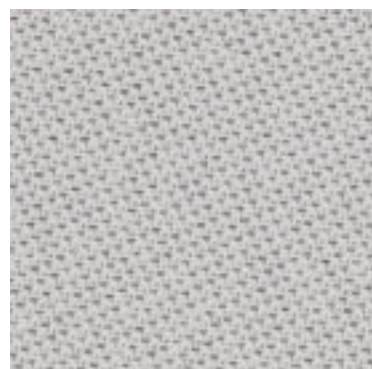
CHARACTERISTICS

Comp. Topcoat: 100% vinyl

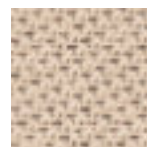
CARACTERÍSTICAS

Comp. Capa superior: 100% vinilo

GABRIEL- TONAL



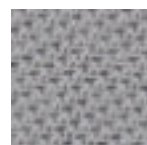
Tonal60122



Tonal 61180



Tonal67089



Tonal60123



Tonal60999

CHARACTERISTICS

Comp. 99%post-consumer recycled polyester, 1% polyester

CARACTERÍSTICAS

Comp. 99%post-consumer recycled polyester, 1% polyester

TEXTILES G2

CREVINMATIS



Matis05



Matis07



Matis52



Matis53



Matis95

CHARACTERISTICS

Comp. 50%PES20%CV 15%CO 10%LLI

CARACTERÍSTICAS

Comp. 50%PES20%CV 15%CO 10%LLI

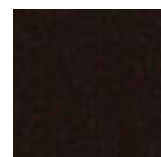
TEXTILES G2

TEXTILES G2

TEXTAAFOAMSSEVEN



SEVEN 11



SEVEN 18



SEVEN 169



SEVEN 168



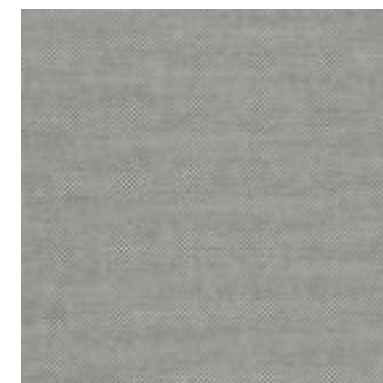
SEVEN 162

CHARACTERISTICS

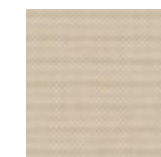
Comp. 100%PES

TEXTILES G2

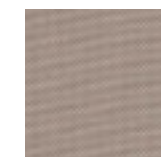
KVADRATFIELD



FIELD 132



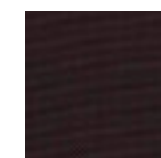
FIELD 222



FIELD 233



FIELD 142



FIELD 693

TEXTILES G3

CARACTERÍSTICAS

Comp. 100% PES

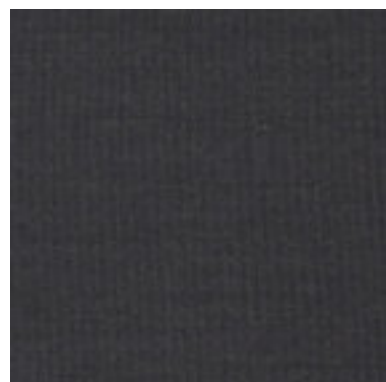
CHARACTERISTICS

Comp. 100% TreviraCS

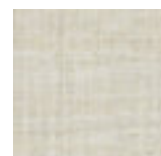
CARACTERÍSTICAS

Comp. 100% TreviraCS

KVADRATREMIX



REMIK383



REMIK223



REMIK233



REMIK 152



REMIK 123

CHARACTERISTICS

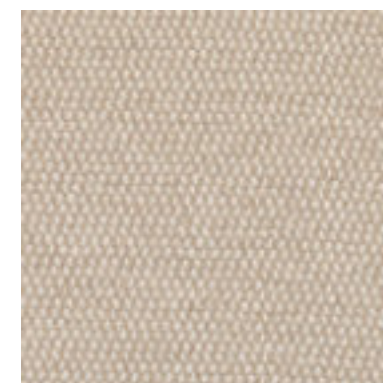
Comp. 90% newwool worsted, 10%nylon

TEXTILES G3

CARACTERÍSTICAS

Comp. 90% lana virgen, 10%naillon

MAHARAM MESSENGER



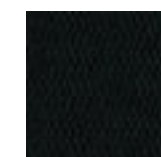
Messenger 78



Messenger 81



Messenger 76



Messenger 08



Messenger 29

TEXTILES G3

CHARACTERISTICS

Comp.78%Recycled polyester, 15%polyester, 7%nylon

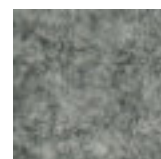
CARACTERÍSTICAS

Comp.78%Recycled polyester, 15%polyester, 7%nylon

GABRIELFOCUSMELAGNE



Focus60309



Focus60311



Focus61242

TEXTILES G4

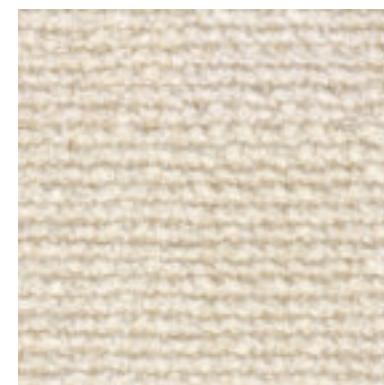
CHARACTERISTICS

Comp. 100%New Zealand wool

CARACTERÍSTICAS

Comp. 100%New Zealand wool

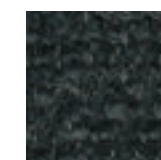
KVADRATMOSS



Moss4



Moss1



Moss8

TEXTILES G5

CHARACTERISTICS

Comp. 52%cotton 22%viscose 14%polyacrylic 6% linen 3%nylon 3%polyester

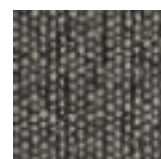
CARACTERÍSTICAS

Comp. 52%cotton 22%viscose 14%polyacrylic 6% linen 3%nylon 3%polyester

KVADRATSAVANNA



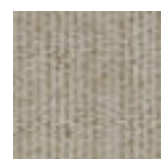
SAVANNA 112



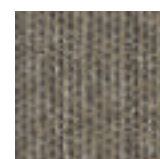
SAVANNA 152



SAVANNA 192



SAVANNA202



SAVANNA 262

TEXTILES G4

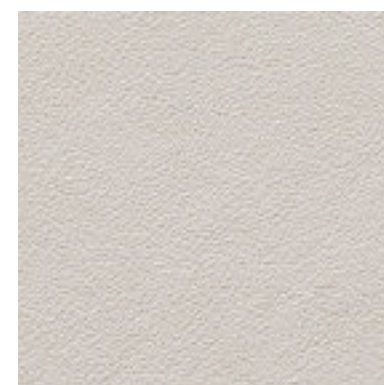
CHARACTERISTICS

Comp. 34% polyester, 31%new wool, 26% polyacrylic, 4% cotton, 3% nylon, 2% linen

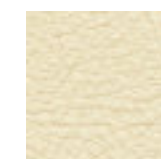
CARACTERÍSTICAS

Comp. 34% poliéster, 31%lana virgen, 26% poliacrílico, 4% algodón, 3% nailon, 2% lino

LEATHER BABEL



CINDER



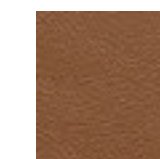
AVORIO



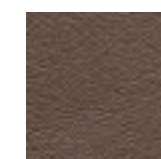
STONE



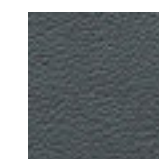
MIEL



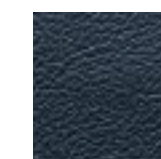
MARRONE



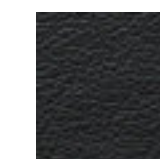
CASTAGNA



NEW GREY



NOTE



NERO

TEXTILES G5

CHARACTERISTICS

Comp. Leather bovine European0.8 - 1mm

CARACTERÍSTICAS

Comp. Leather bovine European0.8 - 1mm

	COMPOSITION	DURABILITY	FIRETEST	MAITENANCE
Aquatic	48% AC 41%PL 11%CO	80.000 Martindale	BS5852:0 1979 Ing Cigarette TB 117-2013	
Apollo	42%CO 25%VI 20%PL 13%LI	42.000 Martindale		
Rubens	65%AC 35%PL	27.000 Martindale		
Oddi	45% PES 43% CO 11% PAC 1%PA	25.000 Martindale	UNE-EN ISO 12945-2	
Relate	100% Trevira CS	80.000 Martindale	BS5852 Crib 5 IMO FTPCode 2010 Part8 NFD 60 013 NFPA 701 SN 198 898 5.2 UNI 9177 Classe 1 USCal. Bull. 117-2013 NFP 92 507 M1 DIN 4102 B1 EN 1021-1/2 ÖNORM B1/Q1 ASTM E84 Class A Unadhered ASTM E84 Class B Adhered UNI 9175 1IM AS/NZS3837 class2 EN 13501-1, B-s1, d0 BS5867 part 2 type B BS 5852 part 1 with treatment	
Tonal	99%post-consumer recycled polyester, 1% polyester	100.000 Martindale	CA TB 117-2013 ASTM E84 Class I BSEN 10211&2 Cigarette and Match BSEN 1021-1 Cigarette BS476 Part 7 class DIN EN 13501-1 B-s1, d0 (glued)	
Valencia	100% Vinyl	300.000 Martindale	AT: ÖNORM A 3800 Teil 1, Qualifikationsklasse Q1 - schwachqualmend AT: ÖNORM B 3825, Gruppe 1 - Schwerbrennbares Verhalten DE: DIN 4102 B2 ES: UNE 23.727-90 1RM.2 EU: ECE Regulation No.118:03 (R118.02 Annexes 6, 7 & 8) EU: EN 1021 Parte 1 y 2 EU: EN 71-2:2006+A1:2007 - Seguridad del juguete - Parte 2: Inflamabilidad FR: NFP 92-503/M2 IMO FTP2010 Código MSC.307 (88) Parte 8 3.1 & 3.2 IT: UNI 9175 (1987) UNI 9175/FA1 (1994) Classe 1. IM (UNO I EMME) (MED) Marine Equipment Directive (en su versión en vigor) US: CAL TB 117-2013, Section E US: ASTM E 84 Adhered - Class I US: FAR 25/853 US: FMVSS302 US: NFPA 260 - Class 1	
Matiss	50% PES, 20% CV, 15% CO, 10% LI	35.000 Martindale	EN ISO 12947/4:1998- EN 14465:2003 BS5852 Source 0 EN 1021 Part 1 NFPA 260 CAL TB-117 EN ISO 12945/2:2000 EN ISO 105-B02:1998 EN ISO 105-B02 /A01:2002	
Seven	100% PES	100.000 Martindale	EN ISO 12947 1 & 2 EN ISO 12945-2 class 4-5 EN ISO B02 EN ISO 13934-1 EN ISO 13937-3 EN ISO 13936 2 EN ISO 105 X12	

	COMPOSITION	DURABILITY	FIRETEST	MAITENANCE
Remix	90%new wool, 10% nylon	100.000 Martindale	AS/NZS1530.3 BS5852 crib 5 with treatment BS5852 part 1 IMO FTPCode 2010 Part7 with treatment IMO FTPCode 2010 Part8 NF D 60 013 NFPA 260 SN 198 898 5.3 with treatment UNI 9175 1IM USCal. Bull. 117-2013 EN 1021-1/2 AS/NZS3837 class2 ÖNORM B1/Q1 ASTM E84 Class A Unadhered ASTM E84 Class A Adhered GB 50222 B1 with treatment (Chinese)	
Field	100% Trevira CS	80.000 Martindale	BS5852 Crib 5 FAR25.853 IMO FTPCode 2010 Part8 NFD 60 013 NFP 92 507 M1 SN 198 898 5.2 1UNI 9175 1IM UNI 9177 Classe 1 USCal. Bull. 117-2013 DIN 4102 B1 EN 1021-1/2 NFPA 701 ASTM E84 Class A Unadhered AS/NZS3837 class1 ÖNORM B1/Q1 EN 13501-1, B-s1, d0	
Messenger	78% Recycled polyester, 15% polyester, 7% nylon	30.000 Martindale	AS/NZS1530.3 AS/NZS3837 Unadhered ASTM E84 Unadhered BS5852 Crib 5* CAL 117-2013 CAN ULC S102 Unadhered EN 1021-1* EN 1021-2* EN 13501 Unadhered* GB/T 17591* ISO 5660 Unadhered NFPA 260 UNI 9175* *passes with additional treatment	
Focus Melagne	100% New Zealand wool	100.000 Martindale	BSEN 10211&2 Cigarette and Match BS5852 Part 10, 1 Cigarette & match CA TB 117-2013 Class Uno UNI 9175 Class 1 EMME AM 18 - NFD 60-013 (only for fabric) ÖNORM A3800-B1-B3825-Q1 UK	
Savanna	34% polyester 31% new wool 26% polyacrylic 4% cotton 3% nylon 2% linen	45.000 Martindale	BS5852 crib 5 with treatment NFD 60 013 with treatment SN 198 898 5.3 with treatment UNI 9175 1IM with treatment USCal. Bull. 117-2013 EN 1021-1/2 AS/NZS3837 class2 BS5852 part 1 with treatment	
Moss	52% cotton 22% viscose 14% polyacrylic 6% linen 3% nylon 3% polyester	50.000 Martindale	BS5852 crib 5 with treatment BS5852 part 1 EN 1021-1/2 US Cal. 117-2013 with Cal. 117 compliant interliner	
Babel*	Leather bovine European 0.8 - 1mm	50.000 Martindale	EN ISO 4045 EN ISO 3377-1 EN ISO 11640/11641 EN ISO 105-B02 EN ISO 11644 EN ISO 5402-1 BS5852-1: 79	

*For a leather finish 4 chairs is the minimum order