



# Avi

A classic low or high back armchair

orangebox



## Product Description

Part of the Smartworking landscape of upholstery products, the Avi reflects a core Orangebox belief: that contemporary offices call out for great design, realised with clarity and finesse.

Avi is available in two back options, low and high, the latter offering workers in open plan spaces a higher degree of privacy to provide more variety and design choice, Avi low and Avi high can be used individually or together, specified with either a wire frame or a flat, four-star base.

Avi is complemented by a number of occasional tables in a variety of standard finishes.



**Top** – AVI-01 & AVI-03, **Bottom** – AVI-05 & AVI-06 Footstools





## Product Range

### AVI-01

Upholstered chair on swivel base



H820 [H32]  
W690 [W27] D790 [D31]  
SH420 [SH17] SD480 [SD19]

### AVI-02

High back upholstered chair on swivel base



H1180 [H46]  
W810 [W27] D880 [D31]  
SH420 [SH17] SD480 [SD19]

### AVI-03

Upholstered chair on wire frame base



H820 [H32]  
W690 [W27] D790 [D31]  
SH420 [SH17] SD480 [SD19]

### AVI-04

High back upholstered chair on wire frame base



H1180 [H46]  
W810 [W27] D880 [D31]  
SH420 [SH17] SD480 [SD19]

### AVI-05

Upholstered footstool on swivel base



H490 [H19]  
W734 [W29] D734 [D29]

### AVI-06

Upholstered footstool on wire frame base



H490 [H19]  
W625 [W25] D472 [D19]





## Product Specification

### Standard Product Description

**Glides:** Standard Glides available. Anti Slip Glides available at no additional cost. [01, 02, 05]

**Wire Frame:** 12mm Diameter mild steel finished in Industrial Silver, Black or White. [03, 04, 06]

**Base and Column:** 4 Star Base in Industrial Silver, Black or White. [01, 02, 05]

**Foam:** Moulded CMHR.

### Optional Upcharges

**Base and Column:**

Polished Base and Black Column,  
Polished Base and Chrome Column,  
Or finished in Chrome, Gold, Taupe, Bronze,  
Copper, Claret Red RAL 3005, Olive Green RAL 6003, Midnight Blue RAL 5008 or Traffic Grey RAL 7042. [01, 02, 05]

**Wire Frame:** Chrome, Gold, Taupe, Bronze, Copper, Claret Red RAL 3005, Olive Green RAL 6003, Midnight Blue RAL 5008 or Traffic Grey RAL 7042. [03, 04, 06]

**Upholstery:** Two and Three tone upholstery available.

### Product Certification

**Intertek Sustainability Clean Air Product Certification**

Clean Air certification provides proof that products have been independently tested and found to conform to VOC standards and to the ANSI/ BIFMA Furniture Emissions Standards. All Orangebox products\* have achieved Gold certification, excluding laminate products which achieve a Silver certification.  
\*With the exception of Fielding Tables.

**BS EN 15373:2007**

Test Level 2 - Structurally suitable and sufficiently stable for General Contract Use.

**BS EN 1335-3:2000**

Structurally suitable and sufficiently stable for General Contract Use.

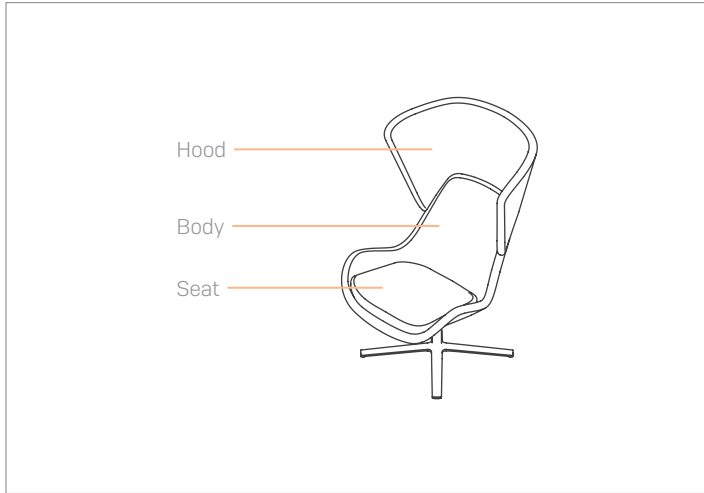
**BS EN 16139:2013**

Test Level 1 - Structurally suitable and sufficiently stable for General Contract Use.

## Fabric Selection

### Two & Three Tone Upholstery

When selecting this option the two fabrics should be from the same family.



#### Fabric Splits



#### Option 1

Seat and back can be different fabrics or leathers.



#### Option 2

Inner and outer back must be selected from the same fabric range, but can be different colours.



#### Option 3

Seat and back can be different fabrics or leathers from the hood.



## Product Finishes

### Base & Column (01, 02, 05)



Black



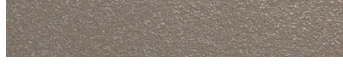
White



Chrome / Polished



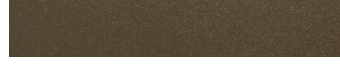
Gold



Taupe



Industrial Silver



Bronze



Copper



Claret Red - RAL 3005



Olive Green - RAL 6003



Midnight Blue - RAL 5008



Traffic Grey - RAL 7042

### Wire Frame (03, 04, 06)



Black



White



Chrome



Gold



Taupe



Industrial Silver



Bronze



Copper



Claret Red - RAL 3005



Olive Green - RAL 6003



Midnight Blue - RAL 5008



Traffic Grey - RAL 7042