

SENA chair

By Christophe Pillet

MATERIALES

- Tablero curvado de respaldo en madera de haya contrachapada y recubierto de poliuretano ignífugo (según normativa inglesa).
- Asiento de tablero contrachapado de haya recubierto de poliuretano ignífugo (según normativa inglesa).
- Pata de madera maciza de roble o nogal.
- Pata metálica de aluminio lacado, con sistema de rotación de 360°.
- Tacos de plástico o de fieltro.

MATERIALS

- Curved backrest in beech plywood covered with fire retardant polyurethane (according to English standards).
- Seat in beech plywood covered with fire retardant polyurethane (according to English standards).
- Solid oak or walnut legs.
- Lacquered aluminium metal legs, with 360° rotation system.
- Plastic or felt feet.

MATÉRIAUX

- Dossier courbé en contreplaqué de hêtre recouvert de polyuréthane ignifugé (selon la réglementation anglaise).
- Siège en contreplaqué de hêtre recouvert de polyuréthane ignifugé (selon la réglementation anglaise).
- Pieds en chêne ou en noyer massif.
- Pieds métalliques en aluminium laqué, avec système de rotation à 360°.
- Patins en plastique ou en feutre.

MATERIALIEN

- Gebogene Rückenlehnenplatte aus Buchensperrholz mit feuerfestem Polyurethan beschichtet (gemäß den englischen Vorschriften).
- Sitz aus Buchensperrholz, beschichtet mit feuerfestem Polyurethan (gemäß den englischen Vorschriften).
- Beine aus massiver Eiche oder Nussbaum.
- Metallbeine aus lackiertem Aluminium, mit 360°-Drehsystem.
- Füße aus Kunststoff oder Filz.

MATERIALI

- Schienale curvo in multistrato di faggio rivestito di poliuretano ignifugo (secondo la normativa inglese).
- Sedile in multistrato di faggio rivestito in poliuretano ignifugo (secondo la normativa inglese).
- Gambe in rovere o noce massiccio.
- Gambe in metallo laccato, con sistema di rotazione a 360°.
- Piedini in plastica o in feltro.

ESPAÑOL

ENGLISH

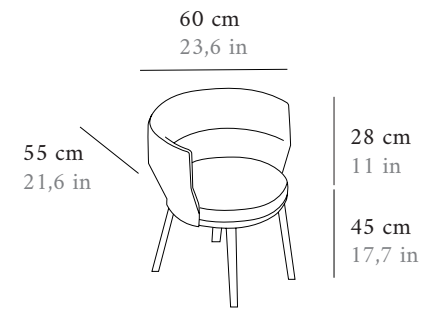
FRANÇAIS

DEUTSCH

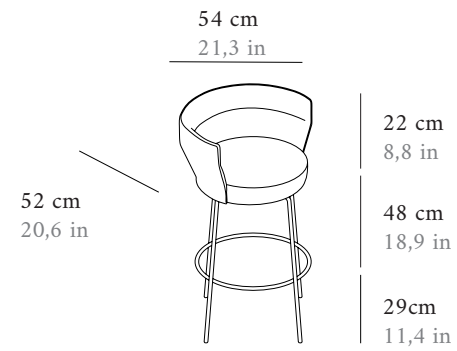
ITALIANO



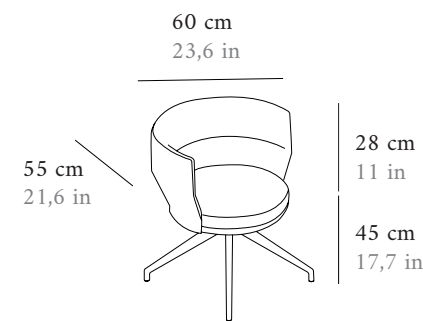
SENA
chair



SEN 101

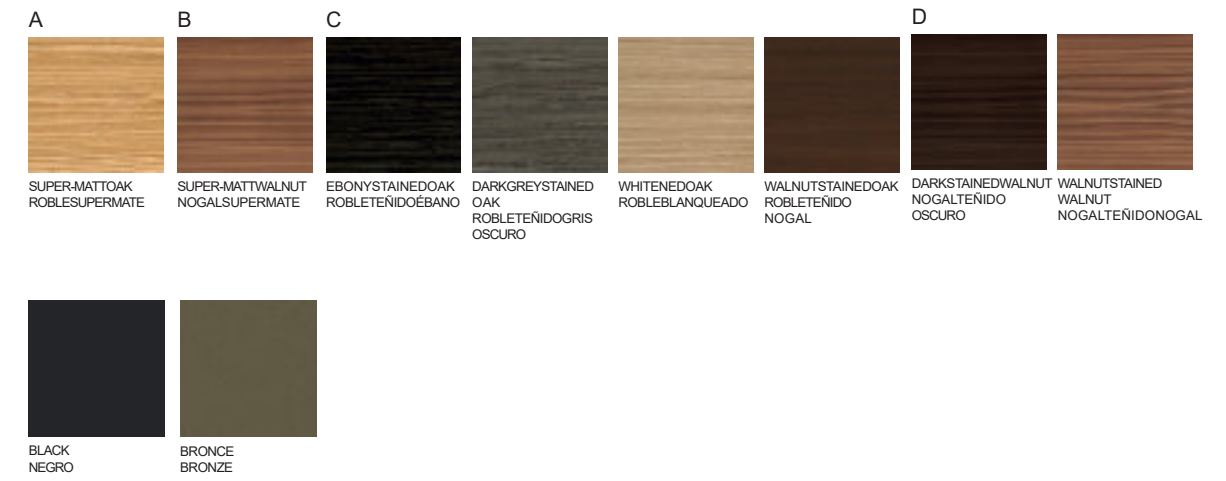


SEN 201



SEN 103

LEGS. PATAS

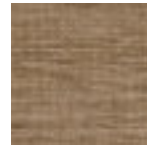


SEATAND BACK, COMBINABLE. ASIENTO Y RESPALDO, COMBINABLES.

L'INTERNO-ACUATONIC



Aquatonic 101



Aquatonic 201



Aquatonic 302



Aquatonic 902



Aquatonic 999

CHARACTERISTICS

Comp. 48% AC 41%PL11%CO

TEXTILES G2

CARACTERÍSTICAS

Comp. 48% AC 41%PL11%CO

L'INTERNO -RUBENS



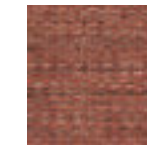
Rubens 1



Rubens 2



Rubens 12



Rubens 7



Rubens 15

CHARACTERISTICS

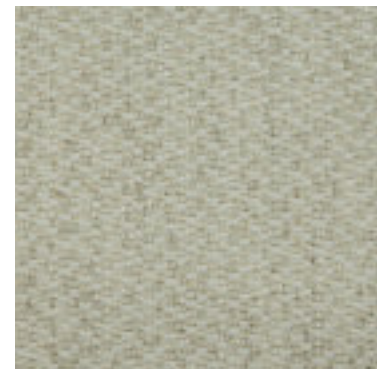
Comp. 65%AC 35%PL

TEXTILES G2

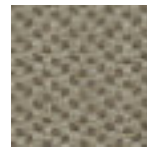
CARACTERÍSTICAS

Comp. 65%AC 35%PL

L'INTERNO-APOLLO



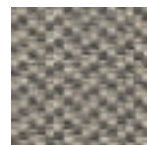
Apollo 1



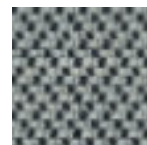
Apollo 2



Apollo 81



Apollo 9



Apollo 99

CHARACTERISTICS

Comp. 42%CO 25%VI 20%PL 13%LI

TEXTILES G2

CARACTERÍSTICAS

Comp. 42%CO 25%VI 20%PL 13%LI

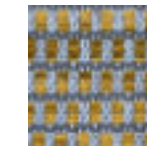
MANUEL REVERT-ODDI



Oddi 9



Oddi 90



Oddi 10



Oddi 55



Oddi 38

CHARACTERISTICS

Comp. 45% PES43% CO 11%PAC 1%PA

TEXTILES G2

CARACTERÍSTICAS

Comp. 45% PES43% CO 11%PAC 1%PA

L'INTERNO - RELATE



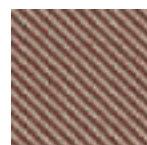
Relate 101



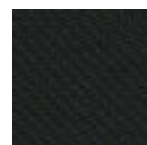
Relate 121



Relate 611



Relate 341



Relate 191

CHARACTERISTICS

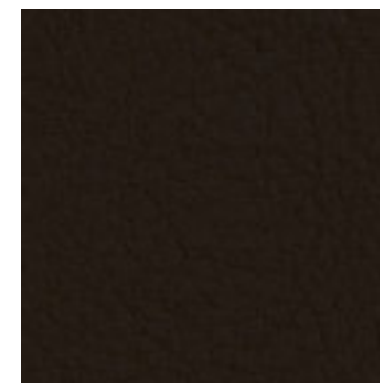
Comp. 100%Trevira CS

CARACTERÍSTICAS

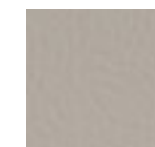
Comp. 100%Trevira CS

TEXTILES G2

SPRADLINGVALENCIA



VALENCIA PRALINE0001



VALENCIA WEISS
8032



VALENCIA LEINEN
1049



VALENCIA
SCHWARZ9035



VALENCIA
GRAPHITE4003

CHARACTERISTICS

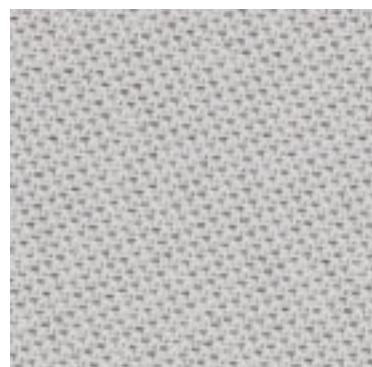
Comp. Topcoat: 100% vinyl

CARACTERÍSTICAS

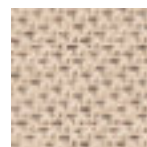
Comp. Capa superior: 100% vinilo

TEXTILES G2

GABRIEL- TONAL



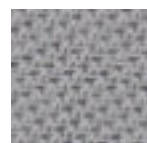
Tonal60122



Tonal61180



Tonal67089



Tonal60123



Tonal60999

CHARACTERISTICS

Comp. 99%post-consumer recycled polyester, 1% polyester

CARACTERÍSTICAS

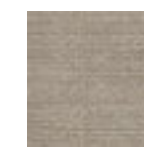
Comp. 99%post-consumer recycled polyester, 1% polyester

TEXTILES G2

CREVINMATIS



Matis05



Matis07



Matis52



Matis53



Matis95

CHARACTERISTICS

Comp. 50%PES20%CV 15%CO 10%LLI

CARACTERÍSTICAS

Comp. 50%PES20%CV 15%CO 10%LLI

TEXTILES G2

TEXTAAFOAMSSEVEN



SEVEN 11



SEVEN 18



SEVEN 169



SEVEN 168



SEVEN 162

CHARACTERISTICS

Comp. 100%PES

TEXTILES G2

KVADRATFIELD



FIELD 132



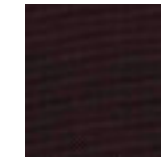
FIELD 222



FIELD 233



FIELD 142



FIELD 693

TEXTILES G3

CARACTERÍSTICAS

Comp. 100% PES

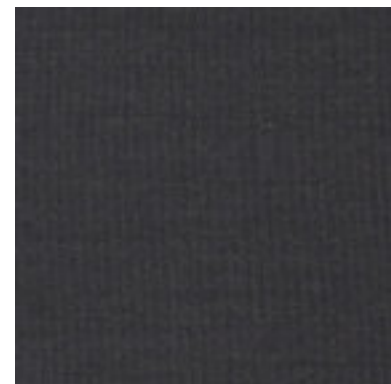
CHARACTERISTICS

Comp. 100% TreviraCS

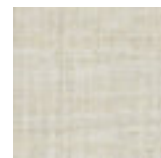
CARACTERÍSTICAS

Comp. 100% TreviraCS

KVADRATREMIX



REMI383



REMI223



REMI233



REMI 152



REMI 123

CHARACTERISTICS

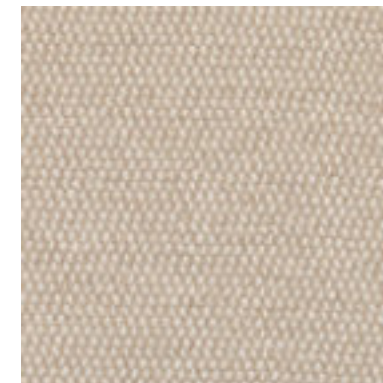
Comp. 90% newwool worsted, 10%nylon

TEXTILES G3

CARACTERÍSTICAS

Comp. 90% lana virgen, 10%nailon

MAHARAM MESSENGER



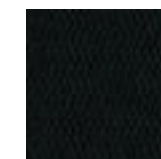
Messenger 78



Messenger81



Messenger 76



Messenger08



Messenger 29

TEXTILES G3

CHARACTERISTICS

Comp.78%Recycled polyester, 15%polyester, 7%nylon

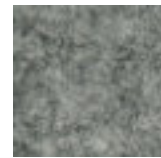
CARACTERÍSTICAS

Comp.78%Recycled polyester, 15%polyester, 7%nylon

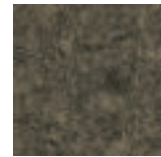
GABRIELFOCUSMELAGNE



Focus60309



Focus60311



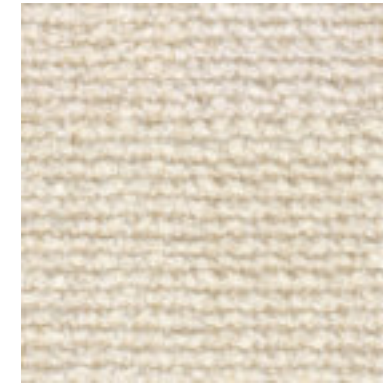
Focus61242

CHARACTERISTICS

Comp. 100%New Zealand wool

TEXTILES G4

KVADRATMOSS



Moss4



Moss1



Moss8

CHARACTERISTICS

Comp. 52%cotton 22%viscose 14%polyacrylic 6% linen 3%nylon 3%polyester

TEXTILES G5

CARACTERÍSTICAS

Comp. 100%New Zealand wool

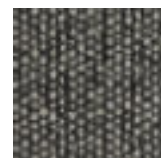
CARACTERÍSTICAS

Comp. 52%cotton 22%viscose 14%polyacrylic 6% linen 3%nylon 3%polyester

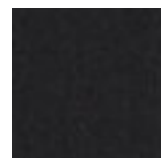
KVADRATSAVANNA



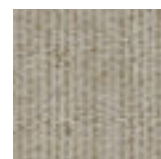
SAVANNA 112



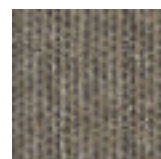
SAVANNA 152



SAVANNA 192



SAVANNA202



SAVANNA 262

CHARACTERISTICS

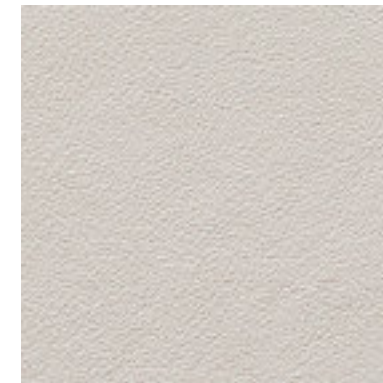
Comp. 34% polyester, 31%new wool, 26% polyacrylic, 4% cotton, 3% nylon, 2% linen

TEXTILES G4

CARACTERÍSTICAS

Comp. 34% poliéster, 31%lana virgen, 26% poliacrílico, 4% algodón, 3% nailon, 2% lino

LEATHER BABEL



CINDER



AVORIO



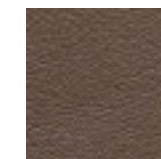
STONE



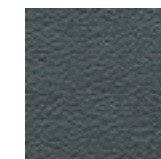
MIEL



MARRONE



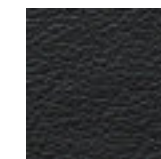
CASTAGNA



NEW GREY



NOTE



NERO

CHARACTERISTICS

Comp. Leather bovine European0.8 - 1mm

TEXTILES G5

CARACTERÍSTICAS

Comp. Leather bovine European0.8 - 1mm

	COMPOSITION	DURABILITY	FIRETEST	MAITENANCE
Aquatonic	48%AC 41%PL11%CO	80.000 Martindale	BS5852:0 1979Ing Cigarette TB 117-2013	
Apollo	42%CO 25%VI 20%PL 13%LI	42.000 Martindale		
Rubens	65%AC 35%PL	27.000 Martindale		
Oddi	45%PES43%CO 11% PAC 1%PA	25.000 Martindale	UNE-EN ISO 12945-2	
Relate	100%Trevira CS	80.000 Martindale	BS5852 Crib 5 IMO FTPCode2010 Part8 NFD 60 013 NFPA 701 SN 198 898 5.2 UNI 9177 Classe1 USCal. Bull. 117-2013 NF P92 507 M1 DIN 4102 B1 EN 1021-1/2 ÖNORM B1/Q1 ASTM E84 ClassA Unadhered ASTM E84 ClassB Adhered UNI 9175 1IM AS/NZS3837 class2 EN 13501-1,B-s1,d0 BS5867 part 2 type B BS5852 part 1with treatment	
Tonal	99%post-consumer recycled polyester, 1% polyester	100.000 Martindale	CA TB 117-2013 ASTM E84 ClassI BSEN 10211&2 Cigarette and Match BSEN 1021-1Cigarette BS476 Part 7 class DIN EN 13501-1 B-s1,d0(glued)	
Valencia	100%Vinyl	300.000 Martindale	AT: ÖNORM A 3800 Teil 1,QualmbildungsklasseQ1- schwachqual-mend AT: ÖNORM B 3825, Gruppe 1- SchwerbrennbaresVerhalten DE: DIN 4102 B2 ES:UNE23.727-90 1R/M.2 EU: ECERegulation No.118:03 (R118.02 Annexes6, 7 & 8) EU: EN 1021Parte 1y 2 EU: EN 71-2:2006+A1:2007 - Seguridaddel juguete- Parte2: Inflamabili-dad FR:NFP92-503/M2 IMO FTP2010Código MSC.307 (88) Parte8 3.1& 3.2 IT:UNI 9175 (1987) UNI 9175/FA1(1994) Classe 1.IM(UNO I EMME) (MED) Marine Equipment Directive (en suversión en vigor) US: CAL TB 117-2013,Section E US: ASTM E84 Adhered – ClassI US: FAR 25/853 US:FMVSS302 US:NFPA260 - Class1	
Matiss	50%PES, 20%CV, 15% CO, 10%LI	35.000 Martindale	EN ISO 12947/4:1998- EN 14465:2003 BS5852 Source0 EN 1021Part1 NFPA 260 CAL TB-117 ENISO 12945/2:2000 EN ISO 105-B02:1998 ENISO105-B02 /A01:2002	
Seven	100%PES	100.000 Martindale	EN ISO 12947 1& 2 ENISO 12945-2 class4-5 EN ISO B02 EN ISO 13934-1 EN ISO 13937-3 EN ISO 13936 2 EN ISO 105 X12	

	COMPOSITION	DURABILITY	FIRETEST	MAITENANCE
Remix	90%new wool, 10% nylon	100.000 Martindale	AS/NZS1530.3 BS5852 crib 5 with treatment BS5852 part 1 IMO FTPCode 2010 Part7 with treatment IMO FTPCode 2010 Part 8 NFD 60 013 NFPA260 SN198898 5.3 withtreatment UNI 9175 1IM USCal. Bull. 117-2013 EN 1021-1/2 AS/NZS3837 class2 ÖNORM B1/Q1 ASTME84 ClassA Unadhered ASTME84 Class A Adhered GB 50222 B1withtreatment(Chinese)	
Field	100%Trevira CS	80.000 Martindale	BS5852 Crib 5 FAR25.853 IMO FTPCode2010 Part8 NFD 60 013 NFP92 507 M1 SN198898 5.2 1UNI 9175 1IM UNI 9177 Classe 1 USCal. Bull. 117-2013 DIN 4102 B1 EN 1021-1/2 NFPA 701 ASTM E84 ClassA Unadhered AS/NZS3837 class1 ÖNORM B1/Q1 EN 13501-1,B-s1,d0	
Messenger	78%Recycled polyester, 15%polyester, 7%nylon	30.000 Martindale	AS/NZS1530.3 AS/NZS3837 Unadhered ASTME84 Unadhered BS5852 Crib 5* CAL 117-2013 CAN ULC S102Unadhered EN 1021-1* EN 1021-2* EN 13501Unadhered* GB/T 17591* ISO 5660 UnadheredNFPA260 UNI 9175* *passeswith additional treatment	
Focus Melagne	100%New Zealand wool	100.000 Martindale	BSEN 10211&2 Cigarette and Match BS5852 Part 10,1Cigarette & match CA TB 117-2013 ClassUno UNI 9175 Class1I EMME AM 18 - NFD 60-013-(onlyfor fabric) ÖNORM A3800-B1-B3825-Q1UK	
Savanna	34%polyester 31%new wool 26%polyacrylic 4% cotton 3%nylon 2%linen	45.000 Martindale	BS5852 crib 5 with treatment NFD 60 013 with treatment SN 198 898 5.3 with treatment UNI 9175 1IMwith treatment USCal. Bull. 117-2013 EN 1021-1/2 AS/NZS3837 class2 BS5852 part 1with treatment	
Moss	52%cotton 22%viscose 14%polyacrylic 6%linen 3%nylon 3%polyester	50.000 Martindale	BS5852 crib 5 with treatment BS5852 part 1 EN 1021-1/2 US Cal. 117-2013with Cal. 117compliant interliner	
Babel*	Leather bovine European 0.8 - 1mm	50.000 Martindale	EN ISO 4045 EN ISO 3377-1 EN ISO 11640/11641 EN ISO 105-B02 EN ISO 11644 EN ISO 5402-1 BS5852-1: 79	

*For aleather finish 4 chairsithe minimumorder