

## Stone planter 80x65x40

by Stefano Giovannoni & Elisa Gargan

Stones outdoor furniture collection, designed by Stefano Giovannoni, convinces with its organic shapes. As its name suggests it appears to be found in nature itself, creating synergism between the natural and the artificial landscape. Stones can fit perfectly into any environment, transmitting its own particular elegance, thanks to its material, as well as its original shape.



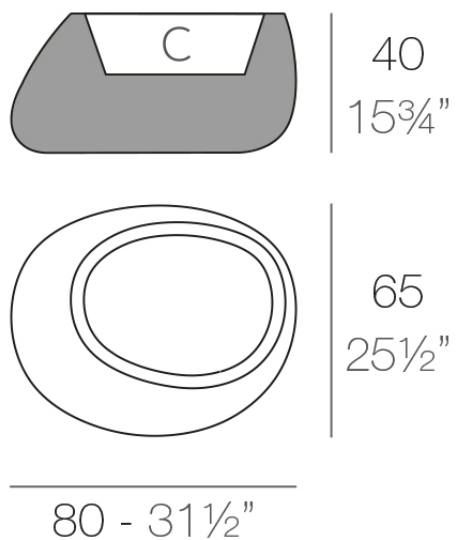
## Info

---

### Description

Pot made of polyethylene resin by rotational moulding. 100% Recyclable. Item suitable for indoor and outdoor use. Available in different finishes.

Weight: 8 Kg



STONE Macetero 40

C = 32 L

STONE Planter 40

C = 8 1/2 gal

## Finishes

---

### finishes

---

#### BASIC

Ref. 55008A



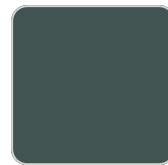
ice



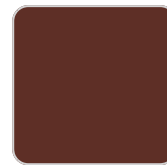
notte blue



crema



green



purjai red



orange



white



black



bronze



steel



anthracite



red



khaki



taupe



ecru



beige

#### Matt Polyethylene

#### SELF-WATERING

Ref. 55008R

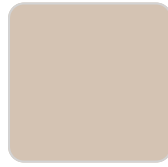
# VONDOM



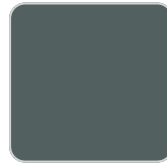
ice



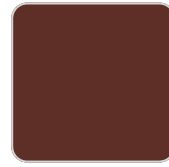
notte blue



crema



green



purjai red



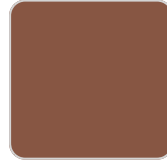
orange



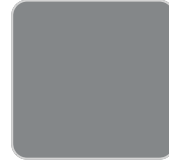
white



black



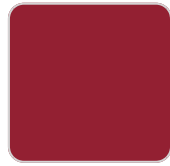
bronze



steel



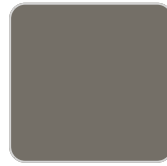
anthracite



red



khaki



taupe



ecru



beige

Self-watering system included in all planters except those with basic finish

## LACQUERED

Ref. 55008F



purjai red



white



black



bronze



steel



anthracite



red



khaki



taupe



ecru

# VONDOM



beige



modo green



champany

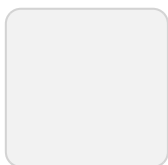
Lacquered Polyethylene

## lighting

---

WHITE LED

Ref. 55008W



ice

White internally lit unit with LED technology. Available only in matte ice white finish.

RGBW LED

Ref. 55008L



ice

Unit with internal lighting with RGBW LED technology and remote control unit for switching colors. Available only in matte ice white finish. Remote control included.

RGBW LED DMX

Ref. 55008D

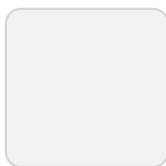


ice

Unit with internal lighting with RGBW LED technology and remote control unit for switching colors. Also controlled by DMX-1024 (wireless), enabling communication between one or more products simultaneously via the DMX transmitter (not included). There are two options to choose from: Professional XLR DMX and Home WIFI DMX. (Remote control included). Optional battery

## RGBW LED BATTERY

Ref. 55008Y

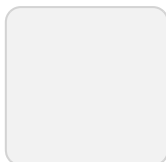


ice

Unit with internal lighting with battery-powered RGBW LED technology. Includes charger and remote control for switching colors and charger. Available only in matte ice white finish.

## RGBW LED DMX BATTERY

Ref. 55008DY



ice

Unit with internal lighting with RGBW LED technology and remote control unit for switching colors. Also controlled by DMX-1024 (wireless), enabling communication between one or more products simultaneously via the DMX transmitter (not included). There are two options to choose from: Professional XLR

# VONDOM

DMX and Home WIFI DMX. (Remote control included).

## Ambients

---

