

Blow planter 40x40x40

by Stefano Giovannoni

Blow Collection, designed by Stefano Giovannoni for Vondom, comes from the willing to develop a **new family of in&out design products** in tune with the Pillow family but different in typology.

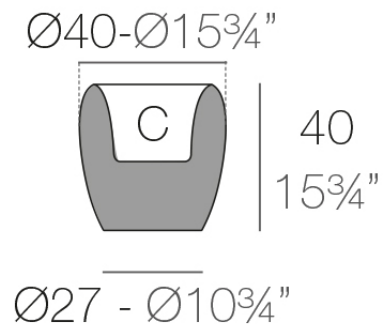


Info

Description

Pots made of polyethylene resin by rotational moulding. 100% Recyclable. Item suitable for indoor and outdoor use. Available in different finishes.

Weight: 3.5 Kg



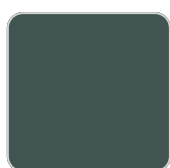
BLOW Macetero 40 C = 10 L
BLOW Planter 40 C = 2 $\frac{3}{4}$ gal

Finishes

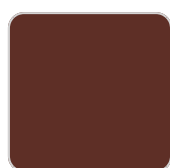
finishes

BASIC

Ref. 55017A



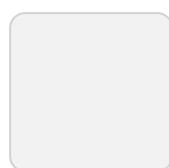
green



purjai red



orange



ice



notte blue



crema



white



black



bronze



steel



anthracite



red



khaki



taupe



ecru



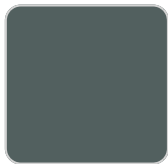
beige

Matt Polyethylene

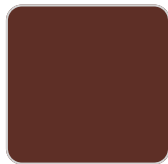
SELF-WATERING

Ref. 55017R

VONDOM



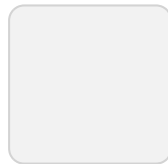
green



purjai red



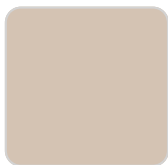
orange



ice



notte blue



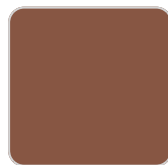
crema



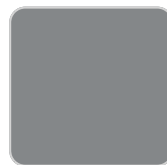
white



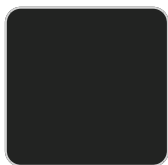
black



bronze



steel



anthracite



red



khaki



taupe



ecru



beige

Self-watering system included in all planters except those with basic finish

LACQUERED

Ref. 55017F



purjai red



white



black



bronze



steel



anthracite



red



khaki



taupe



ecru



beige



modo green



champany

Lacquered Polyethylene

lighting

WHITE LED

Ref. 55017W



ice

White internally lit unit with LED technology. Available only in matte ice white finish.

RGBW LED

Ref. 55017L

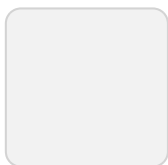


ice

Unit with internal lighting with RGBW LED technology and remote control unit for switching colors. Available only in matte ice white finish. Remote control included.

RGBW LED DMX

Ref. 55017D



ice

Unit with internal lighting with RGBW LED technology and remote control unit for switching colors. Also controlled by DMX-1024 (wireless), enabling communication between one or more products simultaneously via the DMX transmitter (not included). There are two options to choose from: Professional XLR DMX and Home WIFI DMX. (Remote control included). Optional battery

RGBW LED BATTERY

Ref. 55017Y

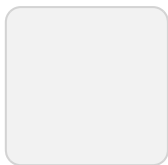


ice

Unit with internal lighting with battery-powered RGBW LED technology. Includes charger and remote control for switching colors and charger. Available only in matte ice white finish.

RGBW LED DMX BATTERY

Ref. 55017DY



ice

Unit with internal lighting with RGBW LED technology and remote control unit for switching colors. Also controlled by DMX-1024 (wireless), enabling communication between one or more products simultaneously via the DMX transmitter (not included). There are two options to choose from: Professional XLR

VONDOM

DMX and Home WIFI DMX. (Remote control included).

