








STACK

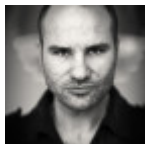
Stack is a stackable and linkable chair and armchair with minimalistic shape and weight. The chair range is available in different colours of polypropylene. The stacking feature is characteristic for Stack as it can be stacked very tightly. Stack is available with a four-legged steel tube frame as well as with a steel wire sled base, and works well as both an elegant meeting chair and an all-round chair. Optional extras are upholstered seat, connectors, stacking trolley and writing tablet.



VARIANTS

	W	D	H	SH
	500 mm	500 mm	770 mm	450 mm
	520 mm	500 mm	770 mm	450 mm
	180 mm	180 mm		
	690 mm	1100 mm	930 mm	
	590 mm	940 mm	940 mm	

DESIGNER



Fredrik Mattson