

Grand Relax

Antonio Citterio, 2019



Grand Relax is a luxurious reclining lounge chair combining outstanding comfort with compact dimensions and a classic understated aesthetic. The exceptional seating experience offered by this chair stems from the harmonious interplay of diverse elements and its conception as a leather-upholstered furnishing. High-quality covers in leather or fabric encase the soft seat and back cushions, which sit loosely on the lounge chair and snugly envelop the sitter. When sitting down, the user sinks slowly into the cushions, while a concealed integrated mechanism absorbs the weight and moves the chair into a reclined position. The seat and backrest move independently in synchronised motion. A control knob can be rotated to adjust the resistance of the mechanism, and the backrest can be locked at any angle. Mounted on an elegant four-star base made of aluminium, the lounge chair can be rotated 360°. A matching ottoman is available as a footrest or additional seating option.

Grand Relax features a combination of choice materials, such as cast aluminium, elegant fabrics and high-quality leather. Antonio Citterio developed the armchair with the material foremost in mind, and wanted the cushions to have a 'lived-in' look. He therefore selected particularly soft cushions that give each armchair an

individual, relaxed appearance – especially with leather covers, which acquire an appealing patina with visible creases over time.

The lower half of the outer backrest shell is covered with embossed split leather, forming a type of shield that enfolds the user, while defining the contours of the lounge chair. The combination of split leather with the rest of the armchair creates a dynamic contrast between the armchair's inner and outer faces, which can be further accentuated with the choice of different colours.

Grand Relax has a compact yet inviting appearance. The carefully designed proportions of the low-slung body, long armrests and upward tapering backrest visually emphasise the dynamic seating experience and emanate a comfortable feeling of security.

Materials

- **Seat/body:** moulded polyurethane foam with plastic frame and integrated synchronised mechanism with locking device.
- **Seat heights:** 415 mm (310 mm with applied load, measured in accordance with EN 1335-1:2000) or 465 mm (360 mm with applied load, measured in accordance with EN 1335-1:2000).
- **Base:** four-star swivel base in die-cast aluminium, polished or powder-coated finish.
- **Seat cushion:** chamber cushion filled with polyurethane foam lozenges and ball fibres.
- **Back cushion and neck cushion:** chamber cushion filled with polyurethane foam cubes and a mix of goose feathers and down.
- **Note:** Cushions should be regularly shaken and plumped to retain their original fullness and shape.
- **Note:** The back shell, the understructure of the seat and ottoman, and the adjustment knob for backrest resistance are covered in Leather Forte (decorative split leather).
- **Note:** The base version determines the finish of the other metal parts (mechanism control lever, cap on resistance adjustment knob).
- **Note:** total height with headrest in highest position 1080 or 1130 mm.
- **Ottoman:** MDF panel covered with polyurethane foam and polyester fleece; chamber cushion filled with polyurethane foam lozenges and ball fibres.
- **Base:** non-swivel four-star base in die-cast aluminium, polished or powder-coated finish.
- **Glides:** fitted with plastic glides for soft floors or felt glides for hard floors.

DIMENSIONS (in accordance with EN 1335-1:2000)



Grand Relax

Grand Relax Ottoman

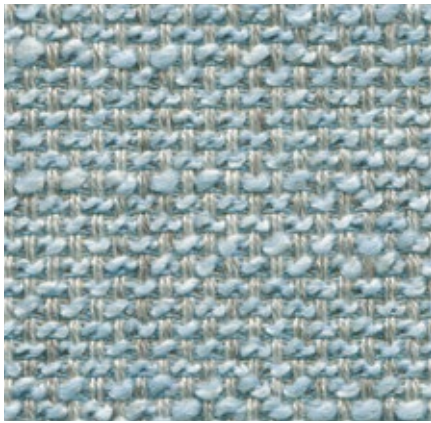
COLOURS AND MATERIALS



Base

Corsaro Home, F8o

vitra.



Corsaro is a sophisticated combination of fine and coarse yarns that give the fabric a natural look with a Mediterranean flair. The two-tone and three-tone shades interwoven with several novelty yarns add particular vibrancy to large surface areas.

Corsaro is available in 13 colours.

Material	5% polyamide, 10% cotton, 46% polyacrylics, 5% linen, 20% wool, 14% polyester
Weight	450 g/m ² (13.3 oz/y ²)
Width	140 cm +/- 2 cm (55")
Abrasion resistance	35,000 Martindale
Fastness to light	Type 5
Pilling	Grade 3-4
Fastness to rubbing	Grade 3-4 dry and wet



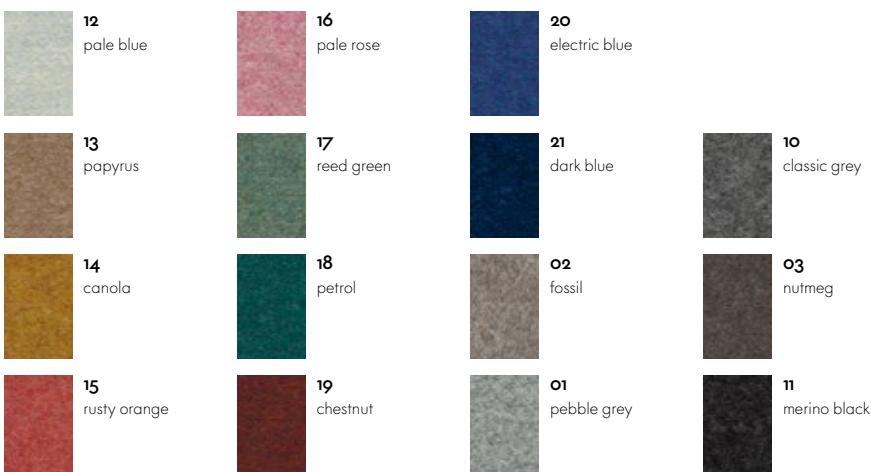
Cosy 2 Home/Office, F8o



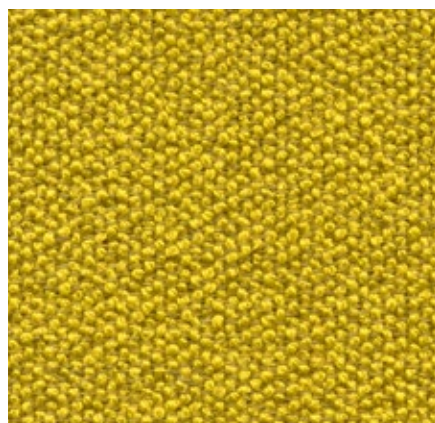
Cosy 2 is a high-quality milled woollen cloth with a warm character. The lively melange yarn emphasises the fabric's natural colours – from delicate shades to vibrant hues – and gains added elegance with colour-coordinated stitching. The fabric offers thermal comfort and excellent durability, making it suited for upholstered furniture in office settings as well as residential applications.

Cosy 2 is available in 15 colours.

Material	20% polyamide, 80% new wool
Weight	590 g/m ² (17.4 oz/y ²)
Width	154 cm +/- 2 cm (60")
Abrasion resistance	50,000 Martindale
Fastness to light	Type 6
Pilling	Grade 4-5
Fastness to rubbing	Grade 4-5 dry and wet



Dumet Home, F8o



Dumet is a cotton blend in a plain weave with a lively appearance. The natural mixed tones create an elegant look with an Italian flair. Dumet is soft and cool to the touch.

Dumet is available in 20 colours.

Material	9% polyamide, 46% cotton, 8% linen, 22% wool, 15% rayon
Weight	485 g/m ² (14.3 oz/y ²)
Width	147 cm +/- 2 cm (57'')
Abrasion resistance	40,000 Martindale
Fastness to light	Type 5
Pilling	Grade 3-4
Fastness to rubbing	Grade 3-4 dry and wet



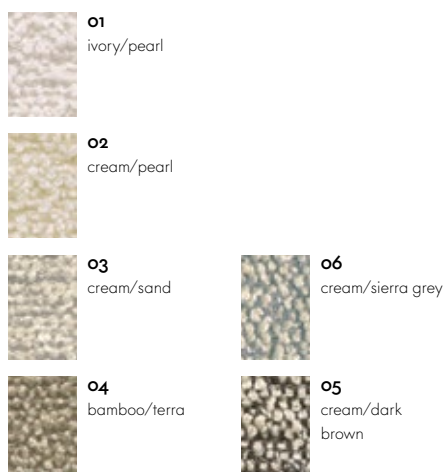
Nubia Home, F10o



Nubia is a blended fabric with a very lively, natural appearance. Its fine sub-structure is interspersed with voluminous bouclé yarn, which gives the fabric depth and a soft, inviting touch. The varying combinations of yarns in natural tones yield either contrasting or calm colour compositions with a distinctly Mediterranean flair.

Nubia is available in 6 colours.

Material	2% polyamide, 30% new wool, 25% polyacrylics, 43% polyester
Weight	570 g/m ² (16.8 oz/y ²)
Width	140 cm (55'')
Abrasion resistance	35,000 Martindale
Fastness to light	Type 5
Pilling	Grade 4
Fastness to rubbing	Grade 3-4 dry and wet



Leather Forte (deco) Home/Office, L20

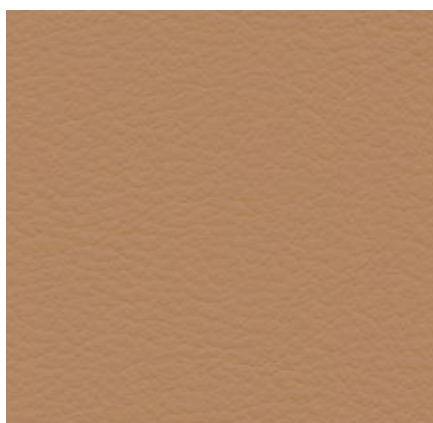


Leather Forte (deco) is of the same quality as Leather Forte, but features a decorative finish that is applied to the leather in a patented process. Leather Forte (deco) is available in 6 colours.

Material	Split leather with decorative finish
Fastness to light	Type 6
Thickness	1.8–2.0 mm



Leather Premium Home/Office, L40

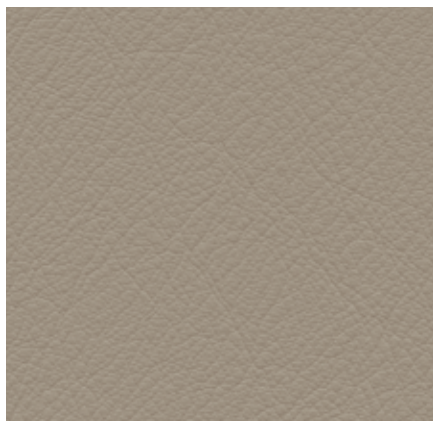


Leather Premium is a relatively smooth cowhide leather with a flat grain and fine top sheen. It is dyed-through and lightly pigmented. The semi-aniline leather is soft to the touch and available in 22 colours.

Material	Semi-aniline nappa leather with a very soft and supple feel
Fastness to light	Type 5
Thickness	1.1–1.3 mm
Fastness to rubbing	Grade 4 dry and wet

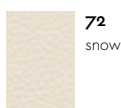


Leather Premium F Home/Office, L50



The properties of Leather Premium F are equivalent to those of Leather Premium. However, Leather Premium F is processed with a tanning agent extracted from olive tree leaves (a waste product of the olive harvest), and the entire production process is carried out with the least hazardous chemicals in the smallest possible amounts. This sustainably produced semi-aniline leather is available in a selection of 6 colours.

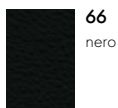
Material	Semi-aniline nappa leather with a very soft and supple feel, vegetable tanned
Fastness to light	Type 5
Thickness	1.1–1.3 mm
Fastness to rubbing	Grade 4 dry and wet



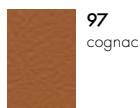
72
snow



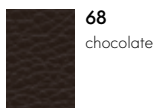
61
umbra grey



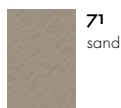
66
nero



97
cognac



68
chocolate



71
sand

