

Fauteuil Direction

Jean Prouvé, 1951



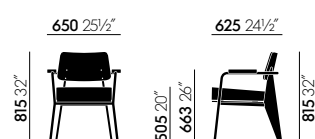
Fauteuil Direction is a comfortable armchair especially suited for dining room seating. Its design exemplifies the constructive aesthetic for which Prouvé is so well known. This compact armchair is also ideal for the home office, where it is particularly striking in combination with the small Compas Direction desk. Outside the home, Fauteuil Direction cuts a fine

figure in elegantly appointed lobbies, restaurants or waiting areas.

Materials

- **Seat and backrest:** polyurethane filling; cover in fabric or leather.
- **Seat height:** 505 mm (445 mm with applied load, measured in accordance with EN 1335-1:2000).
- **Armrests:** solid wood in natural oak with oiled finish, dark stained oak with protective natural lacquer finish, or American walnut with oiled finish.
- **Base:** bent sheet steel and tubular steel, powder-coated (smooth).
- **Glides:** hard glides for carpet or felt glides for hard floors.
- **Origin of wood:** oak (*Quercus robur*) from Western Europe and/or Poland; American walnut (*Juglans nigra*) from the USA.

DIMENSIONS (in accordance with EN 1335-1:2000)



Fauteuil Direction

COLOURS AND MATERIALS



70
solid natural
oak, oiled



88
ecru powder-
coated (smooth)



75
solid American
walnut, oiled



06
Japanese red
powder-coated
(smooth)



04
dark solid oak,
stained, with pro-
tective varnish



40
chocolate
powder-coated
(smooth)



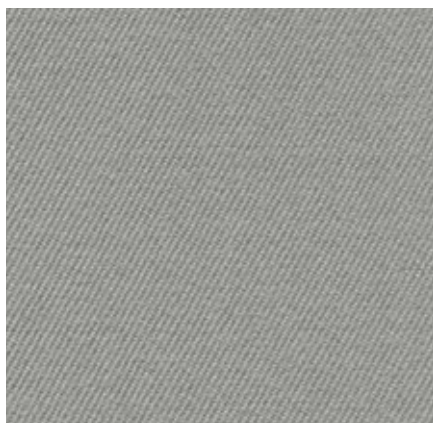
12
deep black
powder-coated
(smooth)

Armrests

Base frame (Colour)

Twill Home/Office, F60

vitra.



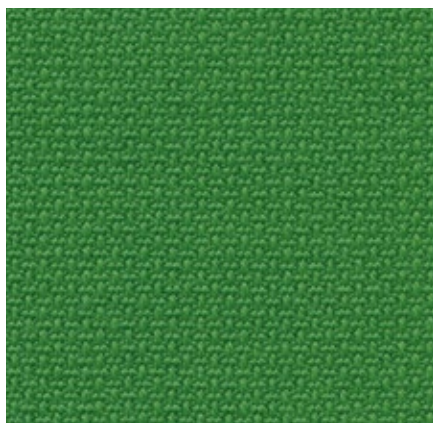
The high percentage of natural fibres gives Twill very pleasant tactile qualities and an inviting appearance. Extremely durable with excellent abrasion resistance, it combines the qualities typically found in home furnishings with the demanding requirements of the project sector.

Twill is available in 18 colours.

Material	30% polyamide, 70% new wool
Weight	325 g/m ² (9.6 oz/y ²)
Width	155 cm +/- 2 cm (61")
Abrasion resistance	100,000 Martindale
Fastness to light	Type 6
Pilling	Grade 4-5
Fastness to rubbing	Grade 4-5 dry and wet



Volo Home/Office, F60



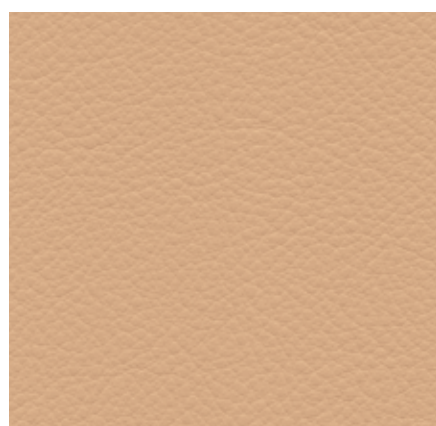
Volo is a finely structured wool blend with a refined weave that gives it an elegant appearance. This expressive textile shows strong solid colours to full advantage while simultaneously offering pleasant tactile qualities. With its soft look and appealing texture, Volo is a perfect fit for home interiors, but it is also well suited for use in the contract sector.

Volo is available in 17 colours.

Material	15% polyamide, 85% new wool
Weight	435 g/m ² (12.8 oz/y ²)
Width	145 cm +/- 3 cm (57")
Abrasion resistance	100,000 Martindale
Fastness to light	Type 6
Pilling	Grade 4-5
Fastness to rubbing	Grade 4-5 dry and wet



Leather Premium Home/Office, L40

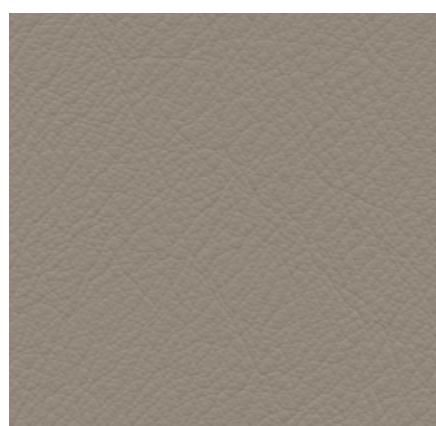


Leather Premium is a relatively smooth cowhide leather with a flat grain and fine top sheen. It is dyed-through and lightly pigmented. The semi-aniline leather is soft to the touch and available in 22 colours.

Material	Semi-aniline nappa leather with a very soft and supple feel
Fastness to light	Type 5
Thickness	1.1–1.3 mm
Fastness to rubbing	Grade 4 dry and wet



Leather Premium F Home/Office, L50



The properties of Leather Premium F are equivalent to those of Leather Premium. However, Leather Premium F is processed with a tanning agent extracted from olive tree leaves (a waste product of the olive harvest), and the entire production process is carried out with the least hazardous chemicals in the smallest possible amounts. This sustainably produced semi-aniline leather is available in a selection of 6 colours.

Material	Semi-aniline nappa leather with a very soft and supple feel, vegetable tanned
Fastness to light	Type 5
Thickness	1.1–1.3 mm
Fastness to rubbing	Grade 4 dry and wet



Art. no. 09153202

Vitra is represented worldwide. Your local Vitra partner can be found at: www.vitra.com.

info@vitra.com | EN 2022

www.vitra.com/fauteuildirection

