
BuzziProp 220-240V Product Specification Sheet

This document contains technical information about the BuzziProp.



www.buzzi.space









Aerodynamic noise regulating light

BuzziProp's aerodynamic design offers sound-absorbing capabilities, delivering acoustic comfort paired with a warm ambient light. BuzziProp Small is perfect for individual tables, while BuzziProp Beam works well in larger collaboration spaces, meeting rooms, and reception areas. BuzziProp Small can be fitted with BuzziSol Solo in either a glass globe for a decorative effect or a reflector spot for more direct lighting. The larger BuzziProp Beam can house BuzziSol Trio in your choice of Spots or Globes. For a more dynamic look, mix and match BuzziProp Small and BuzziProp Beam in various colors and fabrics. Both BuzziProp Small and BuzziProp Beam are specifically designed to absorb high-frequency sounds such as ringtones and noise from chatty colleagues.

Design by BuzziSpace Studio

General

-  Small | Beam
Ceiling Suspended
-  Upholstered acoustic foam shade
LED light source with powder coated metal heat sink and ceiling canopy in black (RAL 9005)
Frosted glass globe and black fabric power cable
-  IP20 Dry Usage
-  Assembled
-  Diffusor: frosted glass globe or 38° reflector spot
-  If installing on suspended ceiling, verify load capacity prior to installation

Certifications



LED Light Source: CE/CB

Acoustics



Absorption



Low Tones



Mid Tones



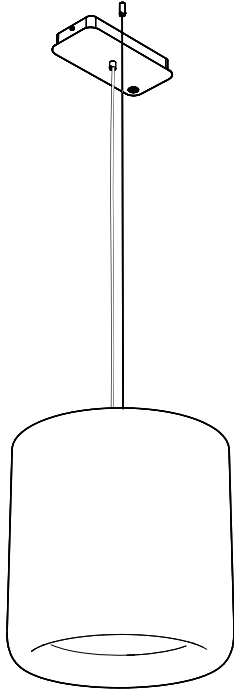
High Tones

Content

Configurations	3	Photometric Data	9
Technical components	4	Dimensions	10
Fabrics	6	Acoustics	11

Configurations

BuzziProp Small



◆ Ceiling Suspended

Upholstered acoustic foam shade



LED light source with powder coated metal heat sink and ceiling canopy in black (RAL 9005)

Black fabric power cable

Wattage: 32 W

Input Voltage: 220 - 240V

Input Frequency: 50/60Hz



Lumen Output: 1500 lumen (LED light source)

Color Temperature: 3000K

Color Rendering Index: >90

Dimmable: 1-10V Protocol (Dali on request)



Shade: Height 45 cm Ø 45 cm



6,5 kg



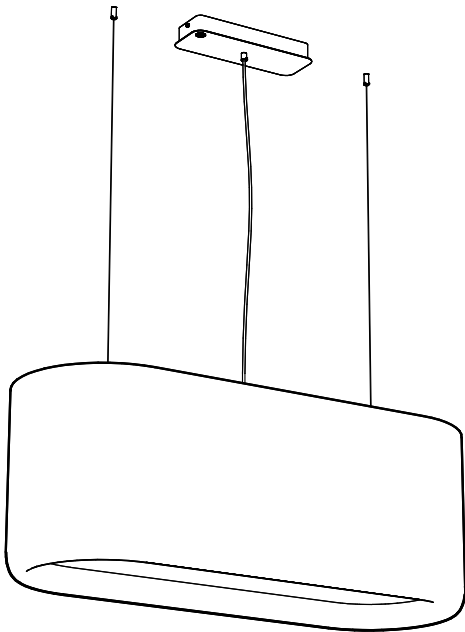
Diffusor: frosted glass globe or 38° reflector spot

Black or alu cables 2 - 5 m



If installing on suspended ceiling, verify load capacity prior to installation

BuzziProp Beam



◆ Ceiling Suspended

Upholstered acoustic foam shade



LED light source with powder coated metal heat sink and ceiling canopy in black (RAL 9005)

Black fabric power cable

Wattage: 60 W

Input Voltage: 220 - 240V

Input Frequency: 50/60Hz



Lumen Output: 3 x 1500 lumen (LED light source)

Color Temperature: 3000K

Color Rendering Index: >90

Dimmable: 1-10V Protocol



Shade: Height 45 cm Width 45 cm Length 120 cm



16,5 kg



Diffusor: 3 x frosted glass globe or 3 x 38° reflector spot

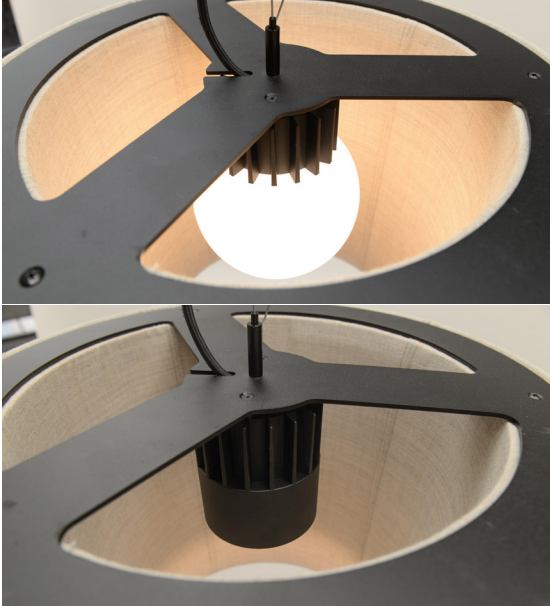
Black or alu cables 2 - 5 m



If installing on suspended ceiling, verify load capacity prior to installation

Technical components

Light Source Prop Small



LED light source with powder coated metal heat sink and ceiling canopy in black (RAL 9005) finished with a frosted glass sphere or a 38° reflector spot.

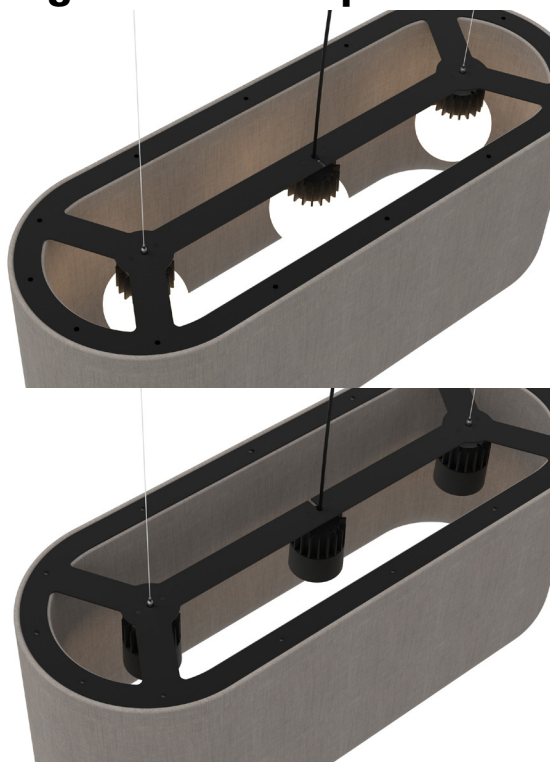
Globe (incl. heat sink)

Height: 20 cm
Width: Ø 15 cm

Spot (incl. heat sink)

Height: 11 cm
Width: Ø 10 cm

Light Source Prop Beam



LED light source with powder coated metal heat sink and ceiling canopy in black (RAL 9005) finished with 3 frosted glass spheres or 3 38° reflector spots.

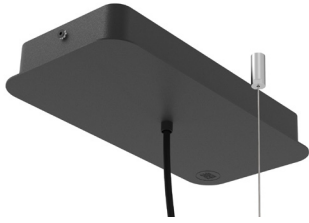
Globe (incl. heat sink)

Height: 20 cm
Width: Ø 15 cm

Spot (incl. heat sink)

Height: 11 cm
Width: Ø 10 cm

Ceiling canopy Prop Small



Black metal ceiling canopy and black fabric power cable incl. Fixing System Screw with 1 alu or black cable of 2 m or 5 m

Width: 14 cm
Length: 28 cm
Height: 4 cm

Ceiling canopy Prop Beam



Black metal ceiling canopy and black fabric power cable incl. Fixing System Screw with 2 alu or black cables of 2 m or 5 m

Width: 12,5 cm
Length: 35 cm
Height: 4,5 cm

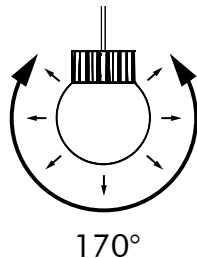
Heat sink



The light element consists out of a black powder coated metal heat sink fitted with a C.O.B. LED source.

BuzziProp Small: 1 x heat sink
BuzziProp Beam: 3 x heat sink

Globe



The BuzziSol Globe is finished with a frosted glass globe, to create a decorative light effect 170° around enlightening the beautifully crafted upholstery.

Specification overview

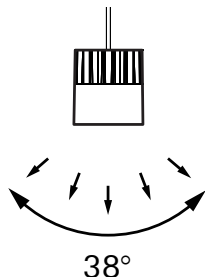
Standard: 3000K | 1-10V DIM

On request (only for BuzziProp Small): 3000K | DALI DIM

BuzziProp Small: 1 x frosted glass globe

BuzziProp Beam: 3 x frosted glass globe

Spot



The BuzziSol Spot is finished with a 38° reflector to direct the light towards the surface.

Specification overview

Standard: 3000K | 1-10V DIM

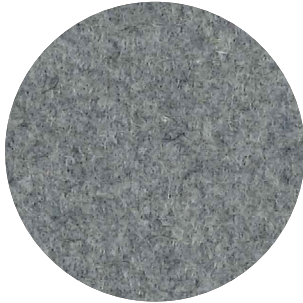
On request (only for BuzziProp Small): 3000K | DALI DIM

BuzziProp Small: 1 x 38° reflector

BuzziProp Beam: 3 x 38° reflector

Fabrics

Fabric



Category A

Composition 70% Recycled Wool, 25% Recycled Polyacryl,
5% Recycled Other Fabrics

Weight 405 g/m² | 11.94 oz/yd²

Abrasion resistance 40.000 Martindale, 50,000 Wyzenbeek

Flammability EU: EN 1021.1/2006 | BS EN 1021.1/2006 (cigarette).
EN 1021.2/2006 | BS EN 1021.2/2006 (match)
USA: CAL TB 117 | ASTM E84 CLASS A

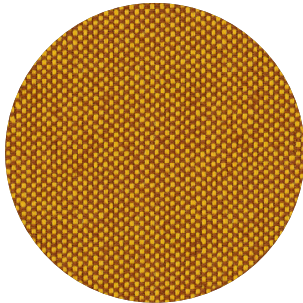
Fastness to light EU: 4 | USA 4

Fastness to rubbing EU: Wet 3-4 | Dry 4-5

Fastness to crocking USA: Wet 5 | Dry 5



Trevira CS+ | CS



Category A

Weight 420 g/m² | 12.39 oz/yd²

Composition 100% Polyester, Trevira CS

Abrasion resistance 100.000 Martindale, 90,000 Wyzenbeek

Flammability BS 5852 part II: CRIB 5 | BS 7176 Medium Hazard
USA: CAL TB 117 | M1 | B1 | EN 1021/1-2 | C1 |
IMO Res. A652 (16)

Fastness to light EU: 6 | USA 5

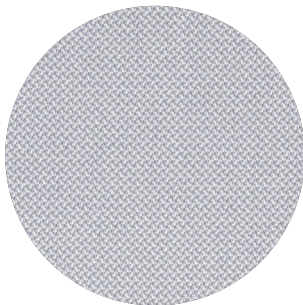
Fastness to rubbing EU: Wet 4-5 | Dry 4-5

Fastness to crocking USA: Wet 5 | Dry 5



Revive 1

kvadrat



Category A

Composition 100% recycled polyester FR

Weight 430 g/lin.m

Abrasion resistance 60.000 Martindale rubs, EN ISO 12947

Flammability EN 1021-1/2 | DIN 4102 B1 | Önorm B1/Q1
UNI 9175 1IM | US Cal. Tech. Bull. 117
IMO A.652 (16)

Fastness to light Note 5-7, ISO 105-B02

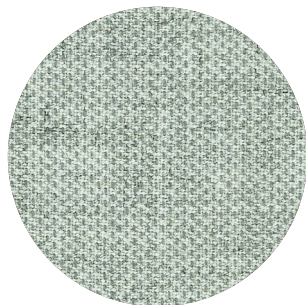
Fastness to rubbing (ISO) dry 5, wet 4-5

Pilling Note 4-5, EN ISO 12945



Clara 2

kvadrat



Category B

Composition 92% new wool, 8% nylon

Weight 400 g/lin.m

Abrasion resistance 80.000 Martindale rubs, EN ISO 12947

Flammability EN 1021-1/2 | BS 5852, ignition source 2-3 | DIN 4102 B2
NF D 60 013 | UNI 9175 11M | US Cal. Tech. Bull. 117, Sec. E
NFPA 260 | IMO A.652(16)

Fastness to light Note 5-7, ISO 105-B02

Fastness to rubbing (ISO) dry 4-5, wet 4

Pilling Note 4, EN ISO 12945



Remix 3

kvadrat



Category B

Composition 90% new wool, 10% nylon

Weight 415 g/lin.m

Abrasion resistance 100.000 Martindale rubs, EN ISO 12947

Flammability EN 1021-1/2 | BS 5852 part 1
Önorm B1/Q1 | NF D 60 013 | UNI 9175, 11M
AS/NZS 1530.3 | Cal. Tech. Bull. 117-2013
NFPA 260 | IMO FTP Code 2010:Part 8

Fastness to light Note 5-7, ISO 105-B02

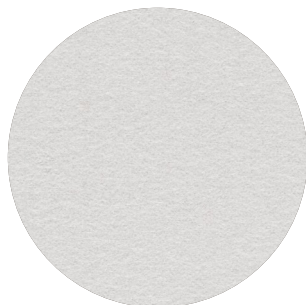
Fastness to rubbing (ISO) dry 4-5, wet 4

Pilling Note 4, EN ISO 12945



Hero

kvadrat



Category C

Composition 96% new wool, 4% nylon

Weight 580 g/lin.m

Abrasion resistance 45.000 Martindale rubs, EN ISO 12947

Flammability EN 1021-1/2 | DIN 4102 B2 | NF D 60 013
UNI 9175 11M | US Cal. Bull. 117-2013 | NFPA 260
IMO A.652 (16)

Fastness to light Note 5-6, ISO 105-B02

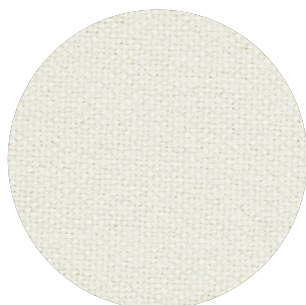
Fastness to rubbing (ISO) dry 4-5, wet 4-5

Pilling Note 3-4, EN ISO 12945



Tonus 4

kvadrat



Category D

Composition 90% new wool, 10% Helanca

Weight 665 g/lin.m

Abrasion resistance 100.000 Martindale rubs, EN ISO 12947

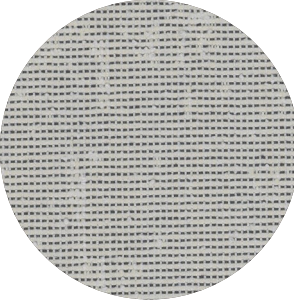
Flammability EN 1021-1/2 | BS 5852 part 1 | DIN 4102 B2
Önorm B1/Q1 | NF D 60 013 | UNI 9175 11M
US Cal. Bull. 117-2013 | NFPA 260 | IMO A.652 (16)

Fastness to light Note 5-7, ISO 105-B02

Fastness to rubbing (ISO) dry 3-5, wet 3-5

Pilling Note 3, EN ISO 12945





Category E

Composition 100% Trevira CS

Weight 700 g/lin.m

Abrasion resistance

35.000 rubs acc. to the Martindale method, EN ISO 12947

Flammability EN 1021-1/2 | DIN 4102 B1 | Önorm B1/Q1
NF D 60 013 | NF P 92 507 M1 | UNI 9175 11M
UNI 9177 classe 1 | US Cal. Tech. Bull. 117
IMO A.652 (16)

Fastness to light Note 5-8, ISO 105-B02

Fastness to rubbing (ISO) dry 4-5, wet 4-5

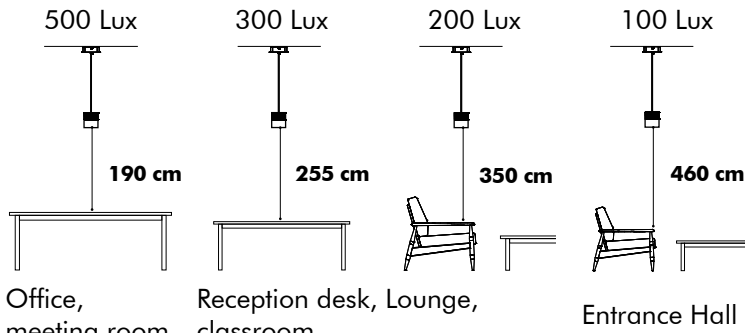
Pilling Note 4, EN ISO 12945



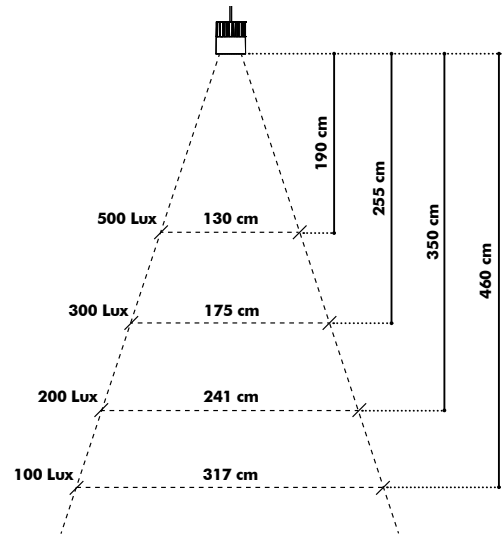
Photometric Data

BuzziSol Spot

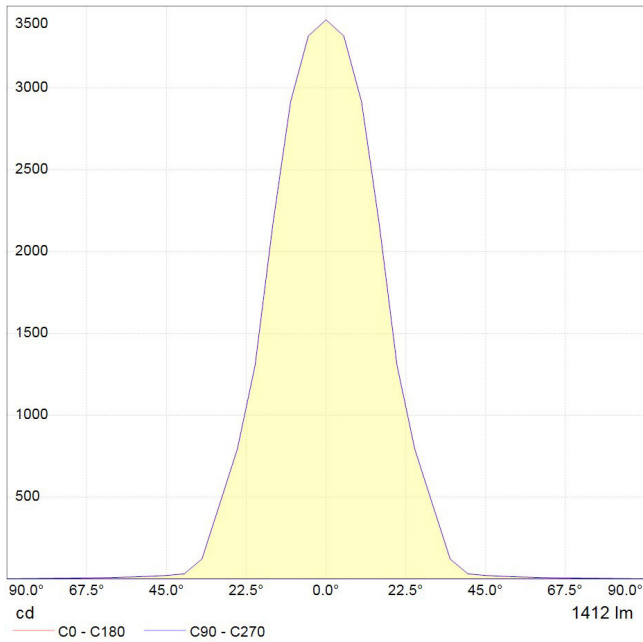
To enlight your workplace or room with optimal lux levels take following measures into account.



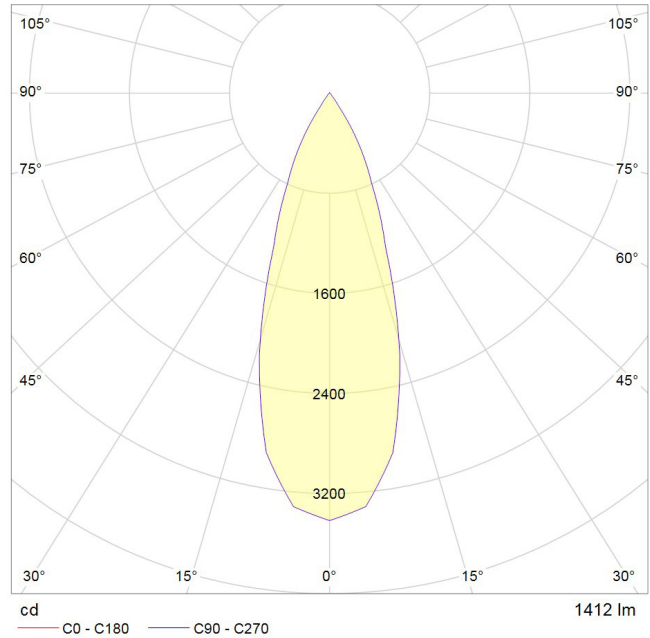
* According to EN12464



Globe Cartesian diagram

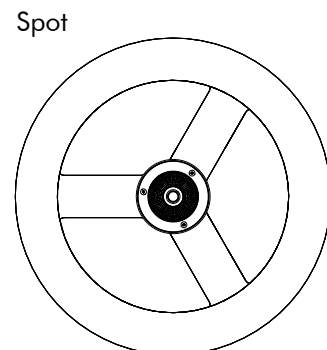
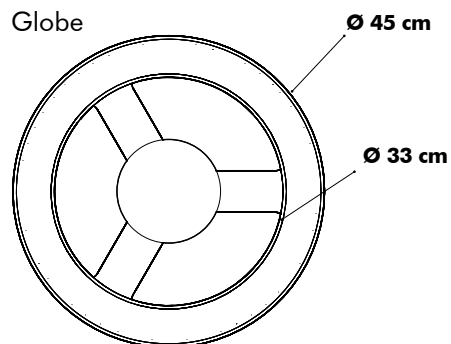
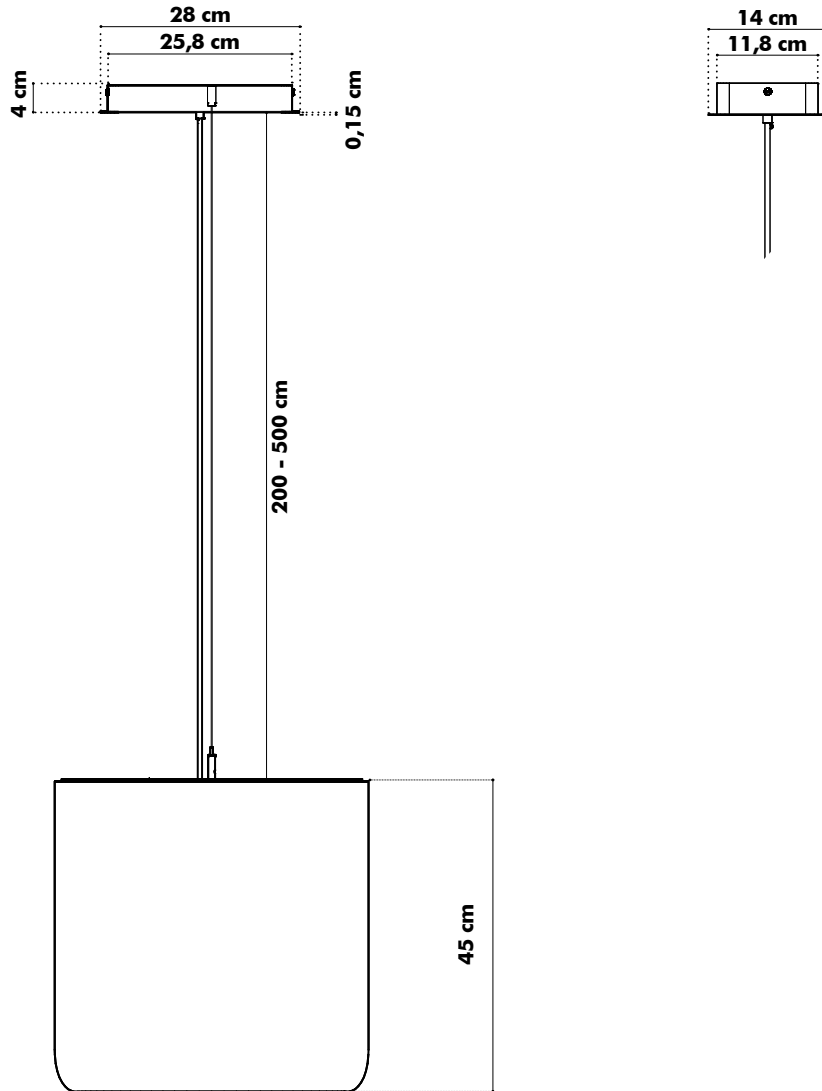


Globe Polar curve

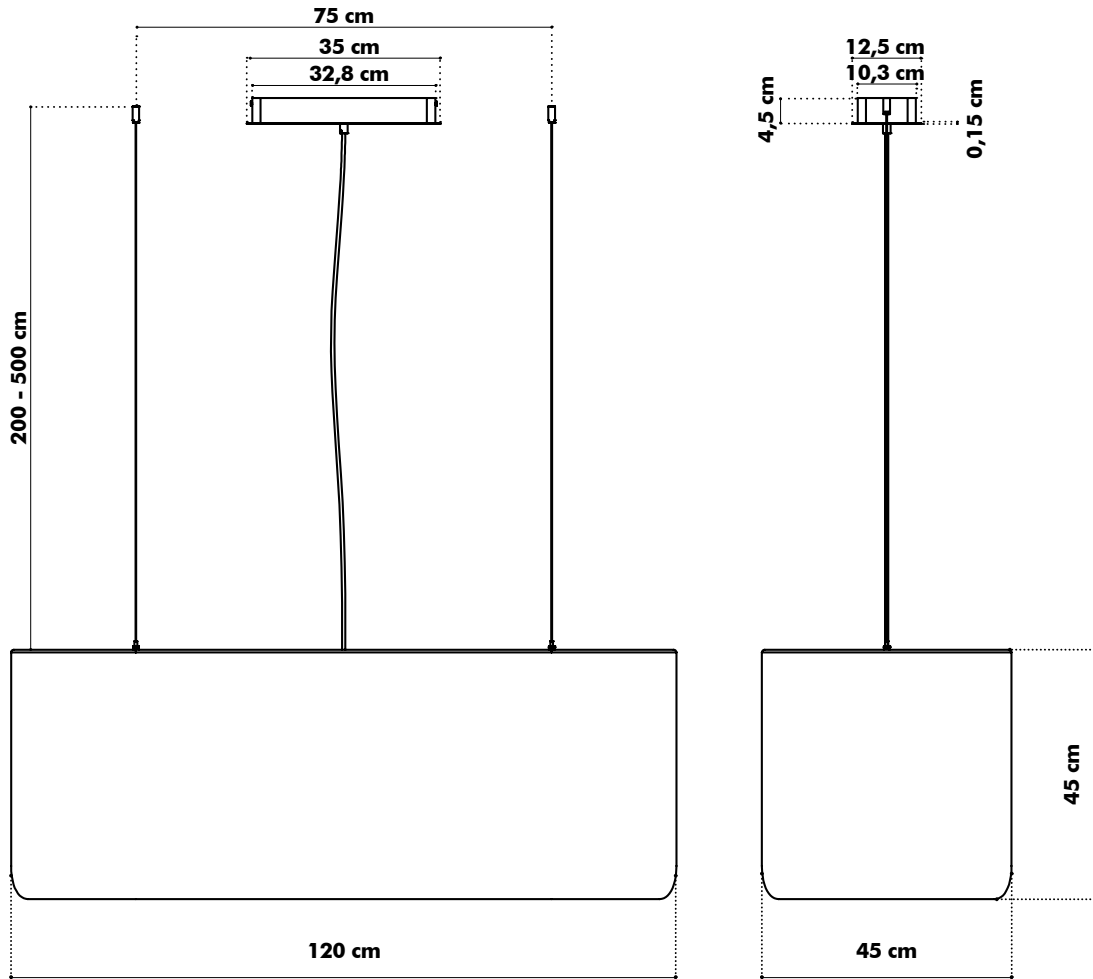


Dimensions

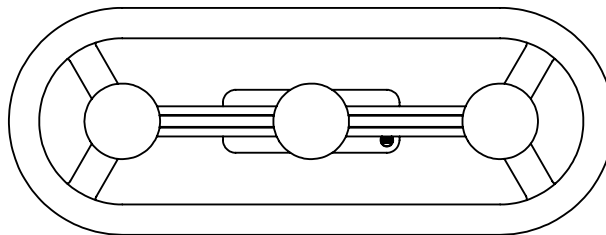
BuzziProp Small



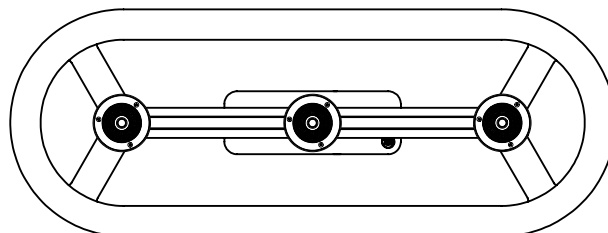
BuzziProp Beam



Globe



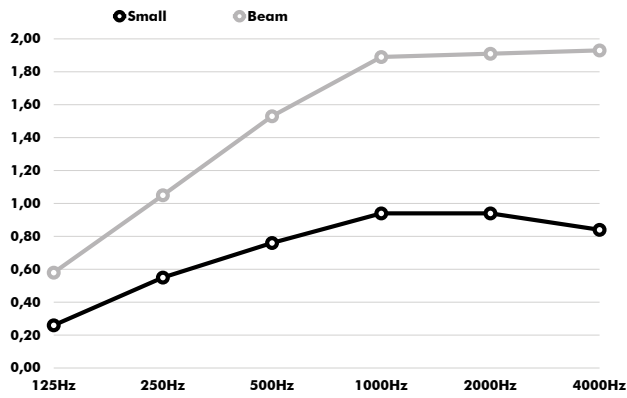
Spot



Acoustics

BuzziProp

Equivalent sound absorption area in m² per object



Hz	Small Aeq/m ²	Beam Aeq/m ²
125	0.26	0.58
250	0.55	1.05
500	0.76	1.53
1000	0.94	1.89
2000	0.94	1.91
4000	0.84	1.93