
BuzziFez

100-240V

Product Specification Sheet

This document contains technical information about the BuzziFez



www.buzzi.space



A playful lighting accessory

BuzziFez is our first table lamp inspired by our beloved range of acoustic lighting solutions. But don't let its size fool you. The lighting accessory houses an energy-efficient and dimmable LED module that provides tactile warm lighting and perfectly suits office, home, and hospitality environments.

The playful table light features a tiltable cylindrical-shaped head made from our signature BuzziFelt material, while the inner layer of fabric is colored in Ivory to ensure optimal light reflection. Easily combine the lighting accessory with other products in our portfolio, such as our range of tables and workstations, to effortlessly spruce up various workspaces.

Designed by BuzziSpace Studio

General



Metal structure in black (RAL 9005)
Power cord in black

Wattage: 4.5W

Input Voltage: 100-240V

Input Frequency: 60Hz



Lumen Output: 330 lumen

Color Temperature: 2700K

Color Rendering Index: <90

Dimming: Touchdimmer



IP20 Dry Usage



Assembled

Certifications

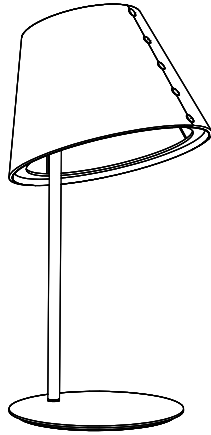
CE/CB | UL Listed

Content

Configurations	3
Components	3
Fabrics	5
Dimensions	6

Configurations

BuzziFez



- 🌲 Metal base in black (RAL 9005)
Black power cord
- Total: Ø 34 cm Height 62 cm
 Ø 13.39" Height 24.41"
- ✂ Base: Ø 29 cm Height 1 cm
 Ø 11.42" Height 0.39"
- Felt shade: Ø 34 cm Height 22,5 cm
 Ø 13.39" Height 8.86"
- ⚖ 4,2 kg | 9.26 lbs

Components

Light source



- Wattage: 4.5W
- Input Voltage: 100-240V
- Input Frequency: 60Hz
- Lumen Output: 330 lumen
- Color Temperature: 2700K
- Color Rendering Index: <90
- Dimming: Touchdimmer

Shade



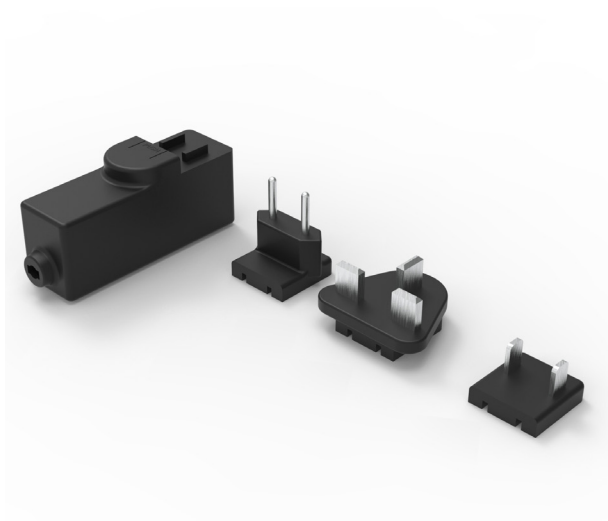
- Shade outside available in Felt:
StoneGrey, Anthracite or Offwhite.
- Shade inside always in Fabric Ivory.
- The shade can be tilted 17°.
- Finished with glossy black push buttons.

Dimming



Touchbutton for on and off.
Hold longer for dimming.

Power Adapter



Power Adapter available for US/EU/UK
Included Power Cord 1,5 m | 59.06"

Fabrics

Felt

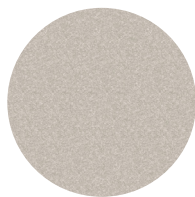
Composition 100% Recycled P.E.T. Felt, latex backing

Weight 1.000 g/m² | 29.49 oz/yd²

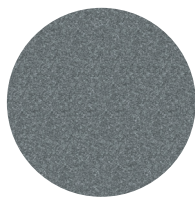
Abrasion resistance >7.000 Martindale

Flammability EU: EN 13501.1 + A1/2009 Class B-s1,d0
USA: ASTM E84 Class A certified

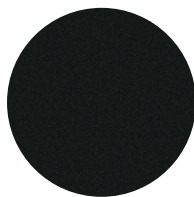
Fastness to light USA 5



Offwhite 63



StoneGrey 67



Anthracite 68

Fabric

Category A

Composition 70% Recycled Wool, 25% Recycled Polyacryl,
5% Recycled Other Fabrics

Weight 405 g/m² | 11.94 oz/yd²

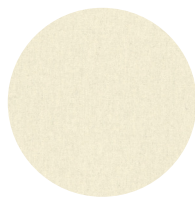
Abrasion resistance 40.000 Martindale, 50,000 Wyzenbeek

Flammability EU: EN 1021.1/2006 | BS EN 1021.1/2006 (cigarette).
EN 1021.2/2006 | BS EN 1021.2/2006 (match)
USA: CAL TB 117 | ASTM E84 CLASS A

Fastness to light EU: 4 | USA 4

Fastness to rubbing EU: Wet 3-4 | Dry 4-5

Fastness to crocking USA: Wet 5 | Dry 5



Ivory 101

Dimensions

BuzziFez

