

# Martela school furniture



Martela

# Index

School tables

School chairs

Storage

Sofas and other seating

Pod family

# SCHOOL TABLES

# PentaGo

Design Iiro Viljanen



- table width 70 cm, depth 60 cm, height 72 cm
- lockable castors or glides with felt
- easy to move with one hand
- rounded corners for safety
- backpack hook on both sides of the table

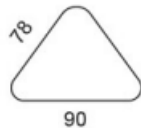


Inspiring  
spaces

**Martela**

# Pinta Triangle

Design Iiro Viljanen & Pekka Toivola



- glides or lockable castors
- height adjustment (60-85 cm) or fixed height (72 cm)
- rounded corners for safety

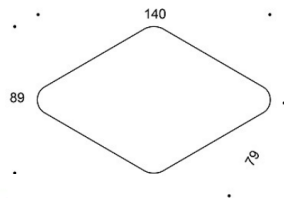


Inspiring  
spaces

**Martela**

# Pinta Salmiakki

Design Iiro Viljanen & Pekka Toivola



- glides or lockable castors
- height adjustment (60-85 cm) or fixed height (72 cm)
- rounded corners for safety



Inspiring spaces

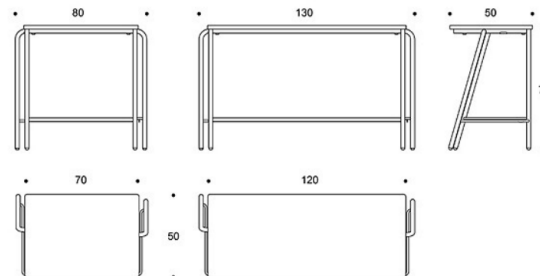
**Martela**

# Grip

Design Mikko Halonen



- two rectangular versions (one or two students)
- tables can be connected to each other
- stackable
- backpack hook on both sides of the table



Inspiring  
spaces

**Martela**

# Trivia Light

Design Iiro Viljanen



- tabletop sizes for one or two users, three base heights 72, 90 and 105 cm
- adjustable glides, a backpack hook on both sides of the table
- stackable
- modesty panel as an option, table trolley available





# Trivia

Design Iiro Viljanen



- tabletop 60 x 50 and 70 x 50 cm
- manually height adjustable 56-79 cm or 59-82 cm
- backpack hooks on both sides of the table
- with or without drawer (polyester fiber)
- tilting top as an option



Inspiring  
spaces

**Martela**

# Jojo

Design Iiro Viljanen



- height adjustable, gas spring or electric height adjustment
- smaller H-base or bigger X-base
- tabletop sizes vary depending on the base
- rounded or sharp corners on tabletop
- lockable castors or glides
- backpack hook as an option



# Alku folding table

Design Iiro Viljanen



- tabletop size 60/70/80 x 120/140 cm
- lockable castors
- an easy-to-use folding mechanism



Inspiring  
spaces

**Martela**

# Snap folding table



- two base lengths: 50 cm base for tabletop depth 50/60 cm and 70 cm base for tabletop depth 70/80cm
- integrated castors on two legs → easy to move around, a user-friendly folding mechanism
- when folded, the legs fold up in a compact way and the table becomes very flat
- table trolley available

Inspiring  
spaces

**Martela**

# SCHOOL CHAIRS

## Table and chair heights for students

### Examples

Age 7-8  
Height ~ 125 cm  
Preschool & classes 1-2

Age 9-10  
Height ~ 136 cm  
Classes 3-4

Age 11-12  
Height ~ 148 cm  
Classes 5-6

Age 13-14  
Height ~ 159 cm  
Secondary school

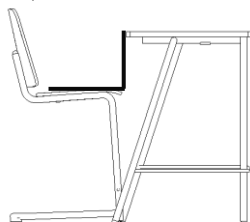
Age 15 +  
Height ~167... cm

Distance from seat to table surface

3-6 yrs 20-25 cm

6-9 yrs 24-29 cm

9- yrs 25-30 cm



Seat  
52  
cm

Table  
72-77  
cm

Seat  
46-62  
cm

Table  
77-82  
cm

Seat  
37-50  
cm

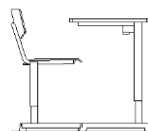
Table  
72  
cm

Seat  
37-50  
cm

Table  
74  
cm

Seat  
40-60  
cm

Table  
72-115  
cm



Trivia chair 36-51 cm &  
Trivia table 56-79 cm



Grip NxT C-base chair 52 cm &  
Jojo table



Ziggy active stool &  
Trivia Light table  
90 cm



Grip NxT C-base chair 62 cm  
& Jojo table



Ella Stool 75 cm &  
Trivia Light table  
105 cm

# Grip NxT

Design Mikko Halonen



- models: sled base, four leg base, 5-star base in two heights and stools in two heights
- low and high backrest for chairs with sled base and four leg base
- upholstered seat available
- can be hung without a separate hanger
- stackable (chair trolley available)
- row connection as an option
- easy to lift with one hand



Inspiring  
spaces

**Martela**



# Grip NxT

Design Mikko Halonen



Inspiring  
spaces

**Martela**



# Grip NxT

Design Mikko Halonen



- C-leg version always with high backrest
- three seat heights 45, 52 and 62 cm
- adjustable and removable footrest as a standard feature in 52 and 62 cm heights
- upholstered seat available
- can be hung without a separate hanger
- stackable
- easy to lift with one hand



Inspiring  
spaces

**Martela**

# Elly

Design Iiro Viljanen



- sled base, four leg base and 5-star base
- separate seat and backrest, possibility for seat and backrest upholstery
- sled and four leg base are stackable, row-connectable without armrests
- chair with armrests can be hung on the tabletop
- Elly 5-star base adjustments: seat height adjustment, backrest height adjustment, seat and backrest angle adjustment



Inspiring  
spaces

**Martela**

# Ella

Design Antti Kotilainen



- sled base, four leg base, wooden legs, 4-star and 5-star base with castors
- bar stools in two seat heights (65 and 75 cm)
- seat with or without upholstery
- backrest without upholstery, with inside upholstery or fully upholstered
- 5-star base always with height adjustment and tilt



Inspiring  
spaces

**Martela**

# Trivia

Design Iiro Viljanen



- steel base: plastic or felt glides, manually height adjustable 36-51 cm
- 5-star base: castors, height adjustable 40-59 cm



Inspiring  
spaces

**Martela**

# Ziggy active stool



- base black painted metal and plastic, black seat
- height adjustable 59-85 cm

**STORAGE**

# Combo

Design Iiro Viljanen



- widths 80 and 120 cm
- 1, 2 and 3 module high versions (two drawers or one cabinet door per module)
- metal legs or castors
- base is always deeper with drawers for stability reasons
- doors and drawers with knob handle or finger pull hole
- doors with or without lock, also available with a mail slot



# **SOFAS & OTHER SEATING**



# BeatBox

Design Iiro Viljanen



- an auditorium-like piece of furniture, w225 x d150 x h130 cm
- two standard colour versions (black or tri-color), dark grey carpet
- a standing workstation when the lowest steps are inserted into the structure
- works also as a space divider



Inspiring  
spaces

**Martela**

# Minibeat

Design Iiro Viljanen



- auditorium-like piece of furniture for smaller children, w117 x d79 x h69 cm
- castors underneath – easy to move
- backside utilized for storage



Inspiring  
spaces

**Martela**

# Puffet

Design Iiro Viljanen



- cushion size 38 x 38 cm, 9 cushions + storage base + fastening belt in a set
- two color versions: colourmix and greyscale
- trolley as an accessory



Inspiring  
spaces

**Martela**

# Bit stool and bench

Design Iiro Viljanen



- stools and benches in different shapes and sizes
- Bit and Bit Round with felt glides and a lifting strap
- Bit Stick and Bit Twist with felt glides or hidden castors



# Bit sofa and armchair

Design Iiro Viljanen



- Bit sofa, w118 x d65 x h65 cm, hidden castors or legs
- Bit armchair, w65 x d65 x h65 cm, hidden castors



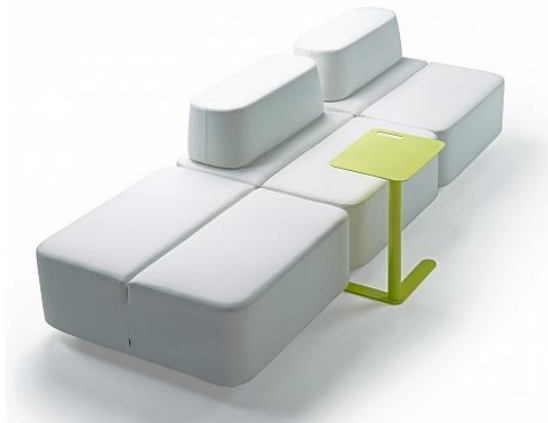
Inspiring  
spaces

**Martela**



# Movie

Design Rane Vaskivuori



- round bench, diameter 70, 90 and 120 cm
- square bench, w90 x d90 x h90 cm, is available with or without backrest
- black plinth



Inspiring  
spaces

**Martela**

# Diagonal

Design o4i Design Studio



- four seats of different shapes
- fully upholstered, black plinth
- optional space divider in two heights, the higher screen has a playful window hole

Inspiring  
spaces

**Martela**

# POD FAMILY



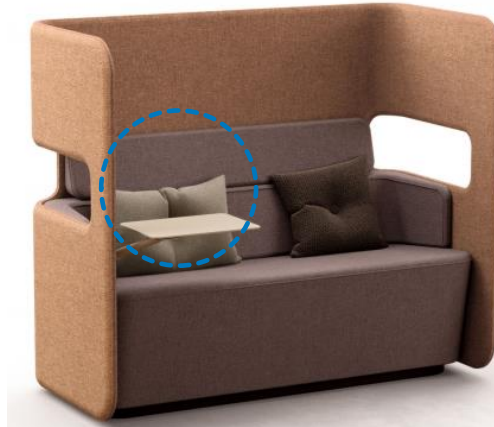
# Pod family

Design o4i Design Studio



# PodSeat, PodSofa, PodMeeting

Design o4i Design Studio



- PodSeat with swivel base or plinth
- PodSeat and PodSofa can be equipped with an integrated and turning laptop table
- PodSeat and PodSofa with low or high back
- PodMeeting is a combination of two sofas and an integrated table in between, high back, power outlet & whiteboard & monitor bracket as an option

Inspiring  
spaces

**Martela**

# PodLounge, PodMeeting Cove

Design o4i Design Studio



PodLounge

- bench or a bench with a screen
- screens in two heights
- power outlet as an accessory



PodMeeting Cove

- consists of screens and an integrated table (72 cm)
- power outlet as an accessory
- seats need to be defined separately

Inspiring  
spaces

**Martela**

# PodWork, PodWork Xpress

Design o4i Design Studio



## PodWork

- working desk with screens
- tabletop in two sizes (fixed or with electrical height adjustment)
- works as an individual desk or can be connected into larger combinations



## PodWork Xpress

- wardrobe and workstation units
- fixed table, height 72 or 105 cm
- offers a private space for short-term working

Inspiring  
spaces

**Martela**



# PodMeeting Xpress

Design o4i Design Studio



## PodMeeting Xpress

- consists of a straight screen in two different heights and a table
- table on one side or both sides of the screen, table heights 72, 90 and 105 cm
- power outlet as an accessory

Inspiring  
spaces

**Martela**

# PodBooth

Design o4i Design Studio



reddot winner 2020



- exterior upholstered or laminated (oak, ash, black or white)
- dark grey interior
- glass frames, handle and tabletop in black laminate
- automated ventilation and light (motion sensor)
- power outlet (Schuko & charging USB)

- built-in castors
- stool (fixed or height adjustable) as an option
- adjustable ventilation and light as an option
- coat hook and hanger as an accessory

Inspiring  
spaces

**Martela**

# PodBooth Duo

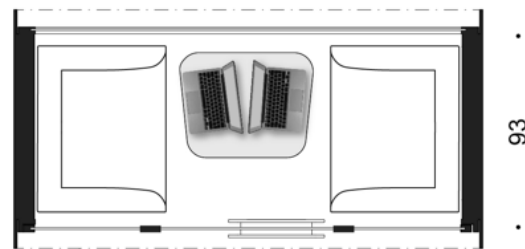
Design o4i Design Studio



- upholstered exterior
- dark grey interior
- glass frames and handle in black laminate
- automated and adjustable ventilation and light (motion sensor)



69,0/61,1 cm



221

93

- power outlet (Schuko & charging USB) on both sides of wall
- integrated table with power sockets as an option
- monitor bracket as an option
- built-in castors as an option

Inspiring  
spaces

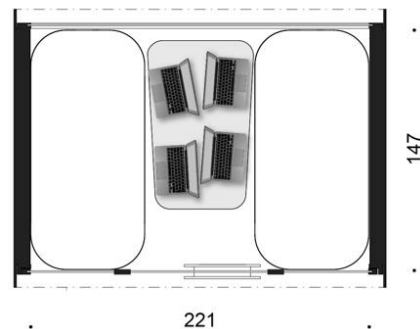
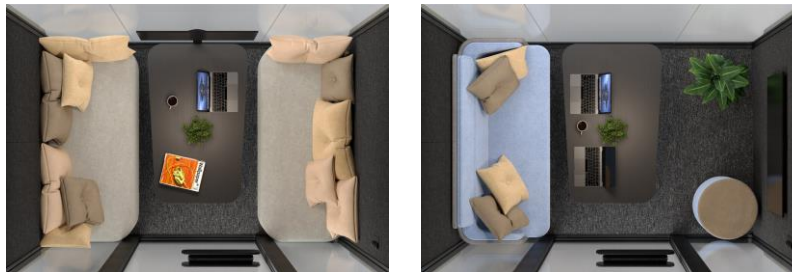
**Martela**

# PodBooth Meeting

Design o4i Design Studio



- upholstered exterior
- dark grey interior
- glass frames and handle in black laminate
- automated and adjustable ventilation and light (motion sensor)



- power outlet (Schuko & charging USB) on both sides of wall
- integrated table with power sockets as an option
- monitor bracket as an option
- built-in castors as an option